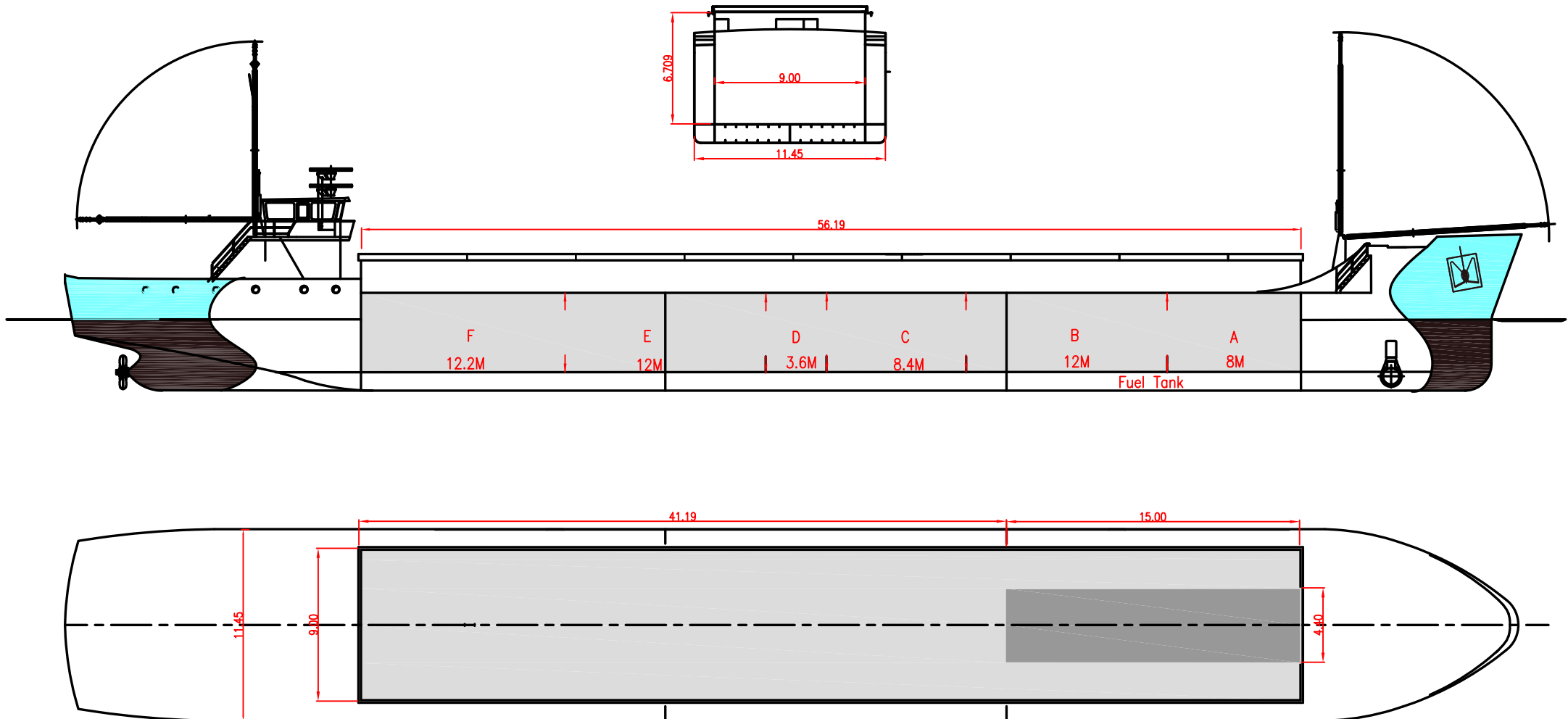




# EEMS STAR

DEADWEIGHT GROUP  
1850 dwt





# EEMS STAR

If not otherwise specified :  
Dist/Dim in meters  
Weights in m.tons

All details given in good faith without guarantee

DWT GROUP 1850-2400  
IMO NO 9421659  
CALL SIGN PHMP  
BUILD 11/2008  
FLAG Netherlands

<b>Builders</b>	Hong Ha Shipyard	<b>Max permissible load on deck, mt/sqm</b>	-
<b>Classification</b>	BV // I + HULL + MACH + AUT-UMS +STRENGTHBOTTOM+MACH	<b>Max permissible load on tanktop, mt/sqm</b>	14.70
<b>Length oa</b>	87.20	<b>Max air draft - 1</b>	18.00
<b>Breadth mld</b>	11.45	<b>Max air draft - 2</b>	8.50
<b>Depth mld</b>	5.83	<b>Distance from keel to top antenna -1</b>	21.00
<b>Draft summer</b>	4.26	<b>Distance from keel to top antenna -2</b>	11.50
<b>Deadweight summer draft</b>	2650	<b>Water ballast capacity</b>	1 400.00
<b>Draft winter</b>	4.26	<b>Fuel main engine - capa.(cbm)</b>	179.00
<b>Deadweight winter draft</b>	2650	<b>Fuel aux engine - capa.(cbm)</b>	-
<b>Gross tonnage</b>	1862	<b>Speed service, knots</b>	9.50
<b>Net tonnage</b>	920	<b>Cargo gear</b>	No
<b>Immersion(load draft) TPC</b>	9.42	<b>Bow thruster</b>	200.kW . Yes
<b>Mean draft of ship in heavy ballast</b>	3.45	<b>Boxed</b>	Yes
<b>Distance from forward end of No.1 Hatch to aft end of last hatch</b>	56.20	<b>Double skin</b>	Yes
<b>Hatch type</b>	Roden Staal	<b>Open hatch</b>	Yes
<b>Container (TEU) capacity Hold / Deck</b>	- / -	<b>Rhine fitted</b>	Yes
		<b>Ammonium Nitrate fitted</b>	Yes
		<b>FeSi fitted</b>	Yes

### Hatch details:

- a : Distance from waterline fully ballasted to top of hatch coamings  
b : Distance from waterline fully loaded to top of hatch coamings  
c : Distance from tank top to top of hatch coamings  
d : Max permissible loading on hatch covers  
e : Distance from ship's rail to inside hatch coamings  
f : Height of hatch coamings  
g : Hatch opening  
h : No. of Loadingholes on hatchcovers X diameter in mm

### Remarks :

2 moveable bulkheads in 5 different positions (storage against aft. Bulkhead).

Htch#	a	b	c	d	e	f	g	h	Hold#	Bale		Grain		Hold dimensions	Compartm :		Communication :		Equipment
										cbm	cbft	cbm	cbft		#	cbm	Type	No	
1	4.14	3.54	6.70	1.00	1.10	1.90	56.20 x 9.00		1	3386	119 577	3386	119 577	56.90 x 9.00 x 6.70	a	482	Telex 1		
															b	723	Telex 2		
															c	506	Tlph 1	0087 077 31 52431	Inmarsat
															d	217	Tlph 2	+0031 653 992315	Gsm
															e	723	Fax		
															f	735	Email	master.eemsstar@telaurus.net	