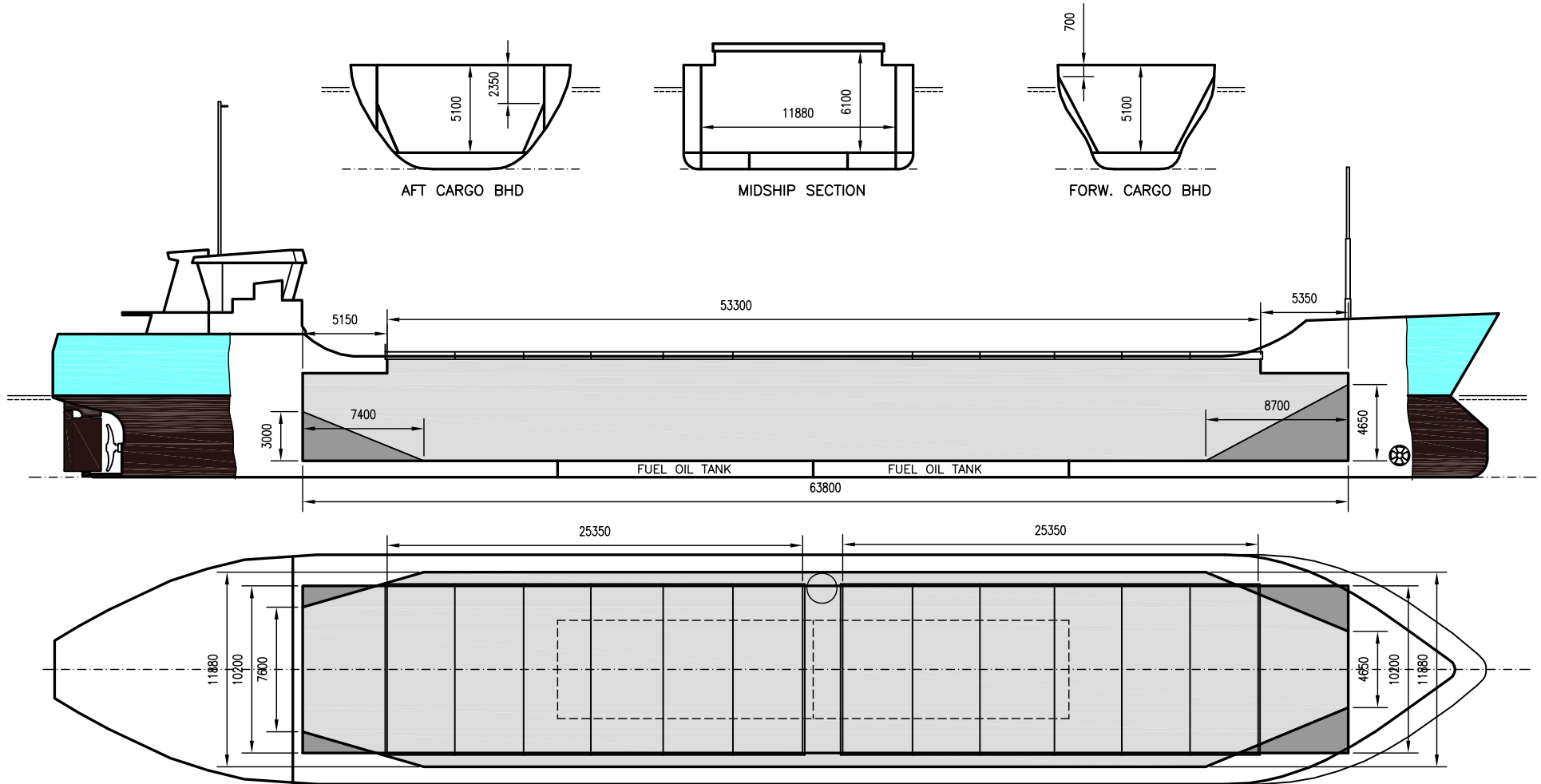


FERRO

DEADWEIGHT GROUP
3500 dwt





FERRO

If not otherwise specified :
Dist/Dim in meters
Weights in m.tons

DWT GROUP 3500
IMO NO 9005730
CALL SIGN C6QJ4
BUILD 1991
FLAG Bahamas

All details given in good faith without guarantee

Builders	Bodewes Scheepswerken BV	Max permissible load on deck, mt/sqm	2.30
Classification	BV // I *HULL *MACH *AUT-UMS, heavy cargo, unres.nav., ICE, aen.c	Max permissible load on tanktop, mt/sqm	12.00
Length oa	88.15	Max air draft - 1	22.40
Breadth mld	14.00	Max air draft - 2	-
Depth mld	6.35	Distance from keel to top antenna -1	25.70
Draft summer	5.00	Distance from keel to top antenna -2	-
Deadweight summer draft	3504	Water ballast capacity	1 210.00
Draft winter	4.90	Fuel main engine - capa.(cbm)	204.00
Deadweight winter draft	3400	Fuel aux engine - capa.(cbm)	-
Gross tonnage	1986	Speed service, knots	10.50
Net tonnage	1246	Cargo gear	No
Immersion(load draft) TPC	10.70	Bow thruster	240 KW . Yes
Mean draft of ship in heavy ballast	2.88	Boxed	No
Distance from forward end of No.1 Hatch to aft end of last hatch	53.50	Double skin	Yes
Hatch type	Pontoon type	Open hatch	No
Container (TEU) capacity Hold / Deck	64 / 39	Rhine fitted	No
		Ammonium Nitrate fitted	Yes
		FeSi fitted	Yes

Hatch details:

- a : Distance from waterline fully ballasted to top of hatch coamings
- b : Distance from waterline fully loaded to top of hatch coamings
- c : Distance from tank top to top of hatch coamings
- d : Max permissible loading on hatch covers
- e : Distance from ship's rail to inside hatch coamings
- f : Height of hatch coamings
- g : Hatch opening
- h : No. of Loadingholes on hatchcovers X diameter in mm

Remarks :

Vessel designed for NAABSA condition.

Htch#	Bale							Grain				Hold dimensions	Compartm :		Communication :		Equipment		
	a	b	c	d	e	f	g	h	Hold#	cbm	cbft		cbm	cbft	#	cbm		Type	No
1	4.30	2.18	6.10	1.75	1.90	0.83	25.35 x 10.20	0	1	4237	149 630	4262	150 513	63.90 x 11.70 x 5.10			Telex 1	430 882 910	Inmarsat
2	4.30	2.18	6.10	1.75	1.90	0.83	25.35 x 10.20	0									Telex 2		
																	Tlph 1	+47 930 34 118	Gsm
																	Tlph 2		
																	Fax		
																	Email	ferro@gtw.dualog.com	