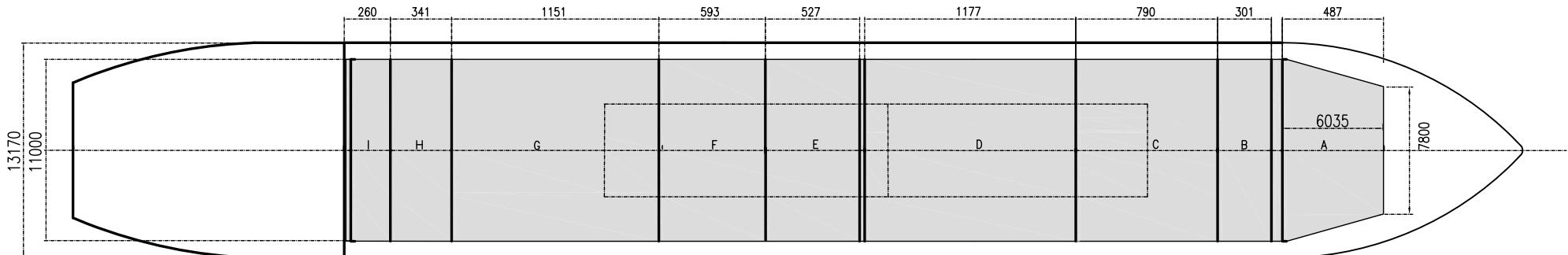
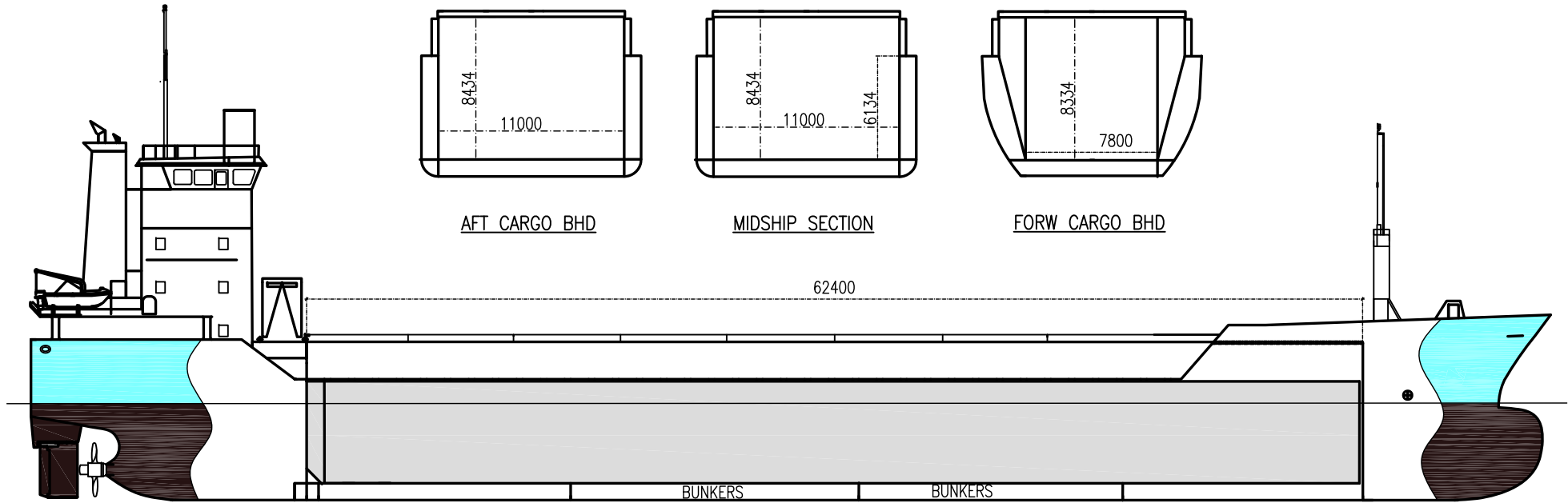


# HAGEN

DEADWEIGHT GROUP  
 4000 dwt





If not otherwise specified :  
Dist/Dim in meters  
Weights in m.tons

All details given in good faith without guarantee

## HAGEN

Ex. KOPENHAGEN  
DWT GROUP 4000  
IMO NO 9167356  
CALL SIGN V2PB3  
BUILD 03/1998  
FLAG Antigua & Barbuda

**Builders** ..... Sanctiure Naval Galati, DSH Hoogezaand  
**Classification** ..... GL / 100 A5 E G SOLAS II Req 19 MC E AUT  
**Length oa** ..... 89.69  
**Breadth mld** ..... 13.17  
**Depth mld** ..... 7.15  
**Draft summer** ..... 5.72  
**Deadweight summer draft** ..... 4218  
**Draft winter** ..... 5.60  
**Deadweight winter draft** ..... 4090  
**Gross tonnage** ..... 2810  
**Net tonnage** ..... 1562  
**Immersion(load draft) TPC** ..... 10.70  
**Mean draft of ship in heavy ballast** ..... 3.75  
**Distance from forward end of No.1 Hatch to aft end of last hatch** ..... 55.60  
**Hatch type** ..... Roden Staal Potoons  
**Container (TEU) capacity Hold / Deck** ..... 117 / 96

### Hatch details:

a : Distance from waterline fully ballasted to top of hatch coamings  
b : Distance from waterline fully loaded to top of hatch coamings  
c : Distance from tank top to top of hatch coamings  
d : Max permissible loading on hatch covers  
e : Distance from ship's rail to inside hatch coamings  
f : Height of hatch coamings  
g : Hatch opening  
h : No. of Loadingholes on hatchcovers X diameter in mm

### Remarks :

Hold is narrowing last 6 meters fw to 7.15 meters.  
2 movable bulkheads, max 3 compartments.  
Strengthened for heavy cargo, equipped for carriage of containers.

**Max permissible load on deck, mt/sqm** ..... -  
**Max permissible load on tanktop, mt/sqm** ..... 18.00  
**Max air draft - 1** ..... 25.75  
**Max air draft - 2** ..... -  
**Distance from keel to top antenna -1** ..... 29.50  
**Distance from keel to top antenna -2** ..... -  
**Water ballast capacity** ..... 1 625.00  
**Fuel main engine - capa.(cbm)** ..... 220.14  
**Fuel aux engine - capa.(cbm)** ..... 52.70  
**Speed service, knots** ..... 10.50  
**Cargo gear** ..... No  
**Bow thruster** ..... .220.kW . Yes  
**Boxed** ..... Yes  
**Double skin** ..... Yes  
**Open hatch** ..... Yes  
**Rhine fitted** ..... No  
**Ammonium Nitrate fitted** ..... Yes  
**FeSi fitted** ..... Yes

Htch#	Bale							Grain				Hold dimensions	Compartm :		Communication :		Equipment		
	a	b	c	d	e	f	g	h	Hold#	cbm	cbft		cbm	cbft	#	cbm		Type	No
1	5.70	3.74	8.30	1.60	1.20	2.30	62.48 x 11.00	5 x 470mm	1	5718	201 931	5718	201 931	62.00 x 11.00 x 8.43			Telex 1	430 401 887	
																	Telex 2	430 401 888	
																	Tlph 1	008816 2145 4292	Inmarsat
																	Tlph 2	+49 171 411 1575	Gsm
																	Fax		
																	Email	master.hagen@telaurus.net	