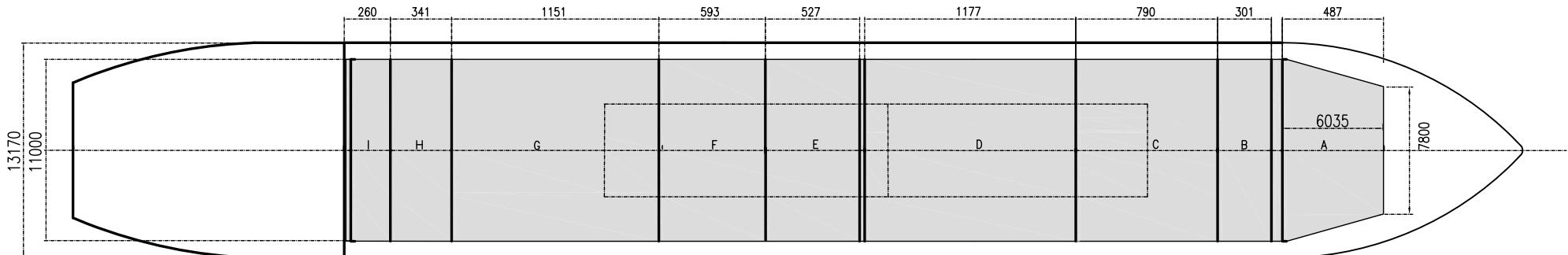
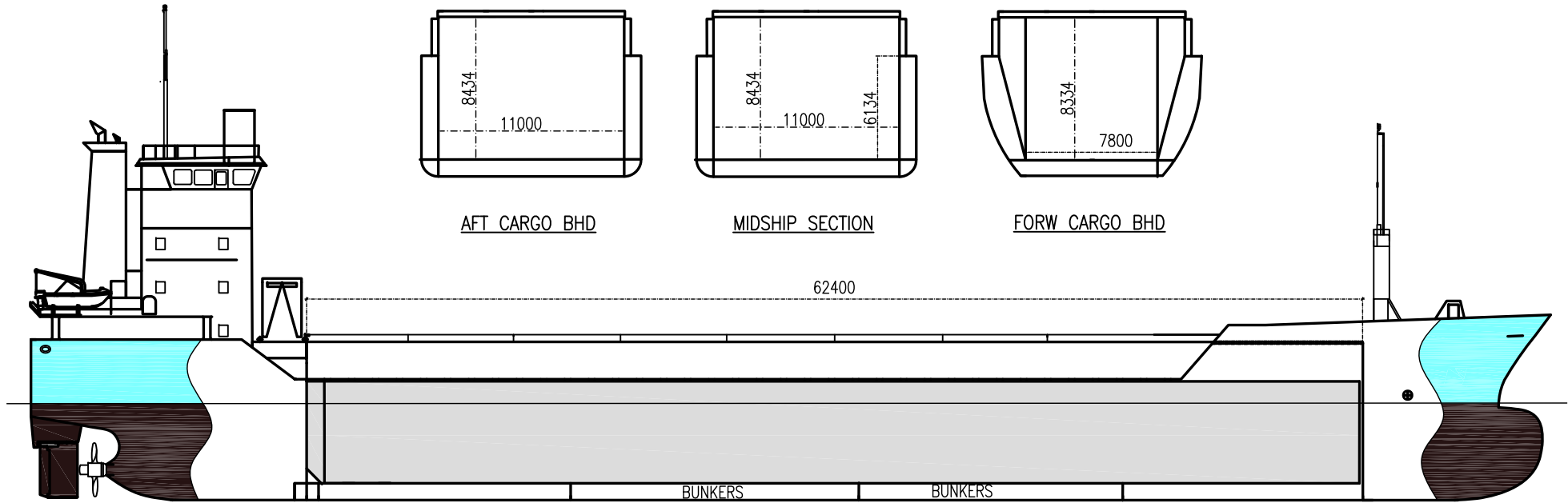


# HELSINKI

DEADWEIGHT GROUP  
 4000 dwt





# HELSINKI

If not otherwise specified :  
Dist/Dim in meters  
Weights in m.tons

All details given in good faith without guarantee

DWT GROUP 4000  
IMO NO 9130236  
CALL SIGN V2PM  
BUILD 12/1997  
FLAG Antigua & Barbuda

Builders ..... Sanctiure Naval Galati/ DSH Hoogezand  
Classification ..... GL / D100A5 E G MC E AUT SOLAS II Req 19  
Length oa ..... 89.74  
Breadth mld ..... 13.17  
Depth mld ..... 7.15  
Draft summer ..... 5.73  
Deadweight summer draft ..... 4170  
Draft winter ..... 5.61  
Deadweight winter draft ..... 4094  
Gross tonnage ..... 2810  
Net tonnage ..... 1562  
Immersion(load draft) TPC ..... 10.70  
Mean draft of ship in heavy ballast ..... 3.75  
Distance from forward end of No.1 Hatch to aft end of last hatch ..... 55.60  
Hatch type ..... Roden Steel Pontons  
Container (TEU) capacity Hold / Deck ..... 117 / 96

Max permissible load on deck, mt/sqm ..... -  
Max permissible load on tanktop, mt/sqm ..... 18.00  
Max air draft - 1 ..... 25.75  
Max air draft - 2 ..... -  
Distance from keel to top antenna -1 ..... 29.60  
Distance from keel to top antenna -2 ..... -  
Water ballast capacity ..... 1 627.00  
Fuel main engine - capa.(cbm) ..... 220.14  
Fuel aux engine - capa.(cbm) ..... 52.70  
Speed service, knots ..... 10.50  
Cargo gear ..... No  
Bow thruster ..... 300.kW . Yes  
Boxed ..... Yes  
Double skin ..... Yes  
Open hatch ..... Yes  
Rhine fitted ..... No  
Ammonium Nitrate fitted ..... Yes  
FeSi fitted ..... Yes

## Hatch details:

- a : Distance from waterline fully ballasted to top of hatch coamings  
b : Distance from waterline fully loaded to top of hatch coamings  
c : Distance from tank top to top of hatch coamings  
d : Max permissible loading on hatch covers  
e : Distance from ship's rail to inside hatch coamings  
f : Height of hatch coamings  
g : Hatch opening  
h : No. of Loadingholes on hatchcovers X diameter in mm

## Remarks :

Two movable bulkheads, max 3 compartments.

Htch#	Bale							Grain				Hold dimensions	Compartm :		Communication :		Equipment		
	a	b	c	d	e	f	g	h	Hold#	cbm	cbft		cbm	cbft	#	cbm		Type	No
1	5.70	3.74	8.30	1.60	1.20	2.30	62.48 x 11.00	5 x 560mm	1	5718	201 931	5718	201 931	62.50 x 11.00 x 8.43			Telex 1	430 401 591	Inmarsat
																	Telex 2	430 401 592	Inmarsat
																	Tlph 1	+49 171 640 69 49	Gsm
																	Tlph 2	0088 16 2145 4316	Iridium
																	Fax		
																	Email	master.helsinki@telaurus.net	
																	Email	mv-helsi@les-raisting.de	