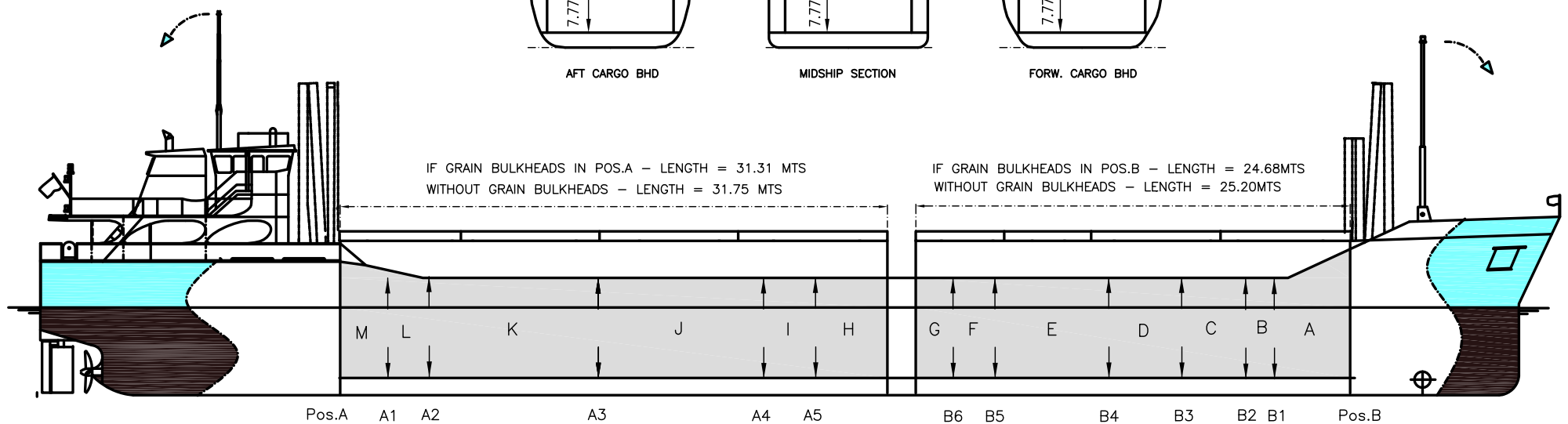
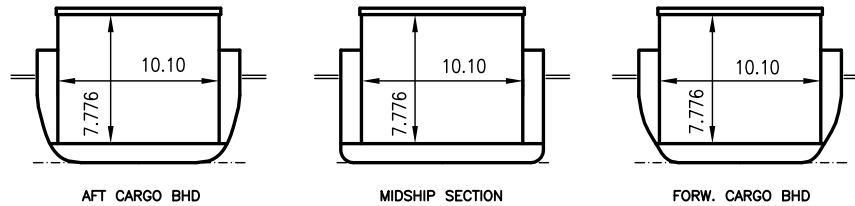


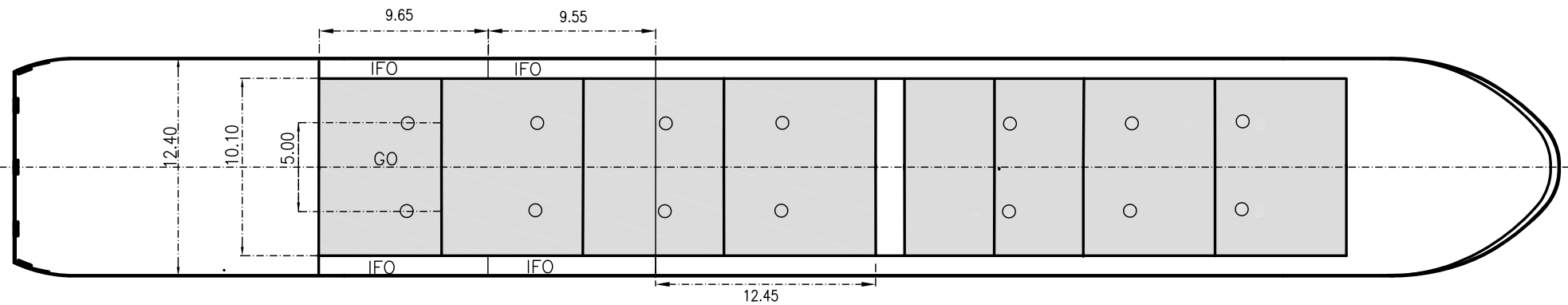


WILSON ALMERIA

DEADWEIGHT GROUP
3500 dwt



Pos.A A1 A2 A3 A4 A5 B6 B5 B4 B3 B2 B1 Pos.B





WILSON ALMERIA

If not otherwise specified :
Dist/Dim in meters
Weights in m.tons

All details given in good faith without guarantee

DWT GROUP 3500
IMO NO 9507362
CALL SIGN 9HA2502
BUILD 10/2010
FLAG Malta

Builders Slovenska Lodenice AS, Komarno Slovakia
Classification GL / 100 A5 E G SOLAS II Req 19 DBC C2P40 MC E AUT
Length oa 88.30
Breadth mld 12.40
Depth mld 6.70
Draft summer 5.15
Deadweight summer draft 3595
Draft winter 5.04
Deadweight winter draft 3483
Gross tonnage 2451
Net tonnage 1325
Immersion(load draft) TPC 10.55
Mean draft of ship in heavy ballast 3.10
Distance from forward end of No.1 Hatch to aft end of last hatch 58.50
Hatch type System TTS multifold crocodile
Container (TEU) capacity Hold / Deck - / 20

Max permissible load on deck, mt/sqm -
Max permissible load on tanktop, mt/sqm 15.00
Max air draft - 1 22.50
Max air draft - 2 -
Distance from keel to top antenna -1 22.35
Distance from keel to top antenna -2 -
Water ballast capacity 1 378.00
Fuel main engine - capa.(cbm) 170.00
Fuel aux engine - capa.(cbm) 44.00
Speed service, knots 10.50
Cargo gear No
Bow thruster 130.kW . Yes
Boxed Yes
Double skin Yes
Open hatch Yes
Rhine fitted No
Ammonium Nitrate fitted Yes
FeSi fitted Yes

Hatch details:

a : Distance from waterline fully ballasted to top of hatch coamings
b : Distance from waterline fully loaded to top of hatch coamings
c : Distance from tank top to top of hatch coamings
d : Max permissible loading on hatch covers
e : Distance from ship's rail to inside hatch coamings
f : Height of hatch coamings
g : Hatch opening
h : No. of Loadingholes on hatchcovers X diameter in mm

Remarks :

Equipped for carriage of containers only on hatch 2 (20 TAU).
Equipped for dangerous goods.
2 movable bulkheads in 9 different positions making 4 different compartments.
Hatch opening (g) is excl. Bulkheads.
Hold dimensions are incl. Bulkheads in parked positions.

Htch#	a	b	c	d	e	f	g	h	Hold#	Bale		Grain		Hold dimensions	Compartment :		Communication :		Equipment
										cbm	cbft	cbm	cbft		#	cbm	Type	No	
1	5.85	3.90	7.95	1.60	1.10	2.25	25.20 x 10.10	6 x 600mm	1	1991	70 312	1991	70 312	24.7 x 10.10 x 7.776	a	321	Telex 1	424876410	Inmarsat
2	5.85	3.90	7.95	1.60	1.10	2.25	31.80 x 10.10	8 x 600mm	2	2509	88 605	2509	88 605	31.34 x 10.10 x 7.776	b	120	Telex 2	424876411	Inmarsat
															c	239	Tlph 1	+49 162 207 0858	Gsm
															d	334	Tlph 2		
															e	500	Fax		
															f	168	Email	master.wilsonalmeria@telaurus.net	
															g	179			
															h	317			
															i	215			
															j	689			
															k	784			
															l	168			
															m	226			