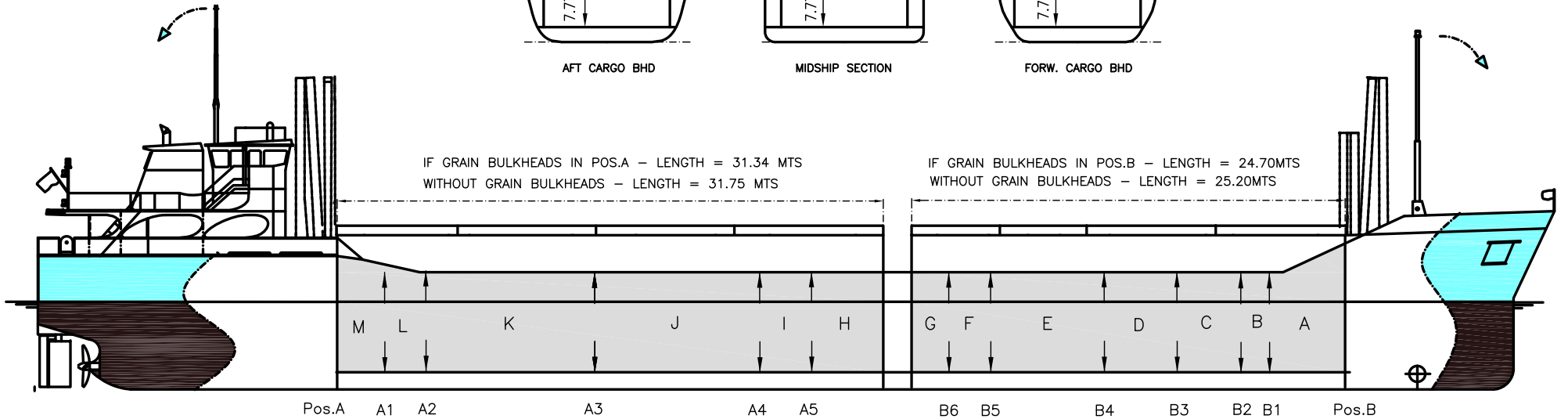
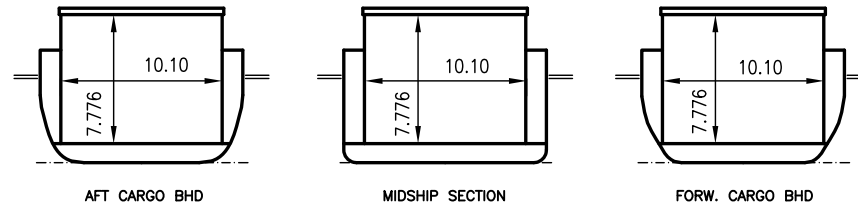


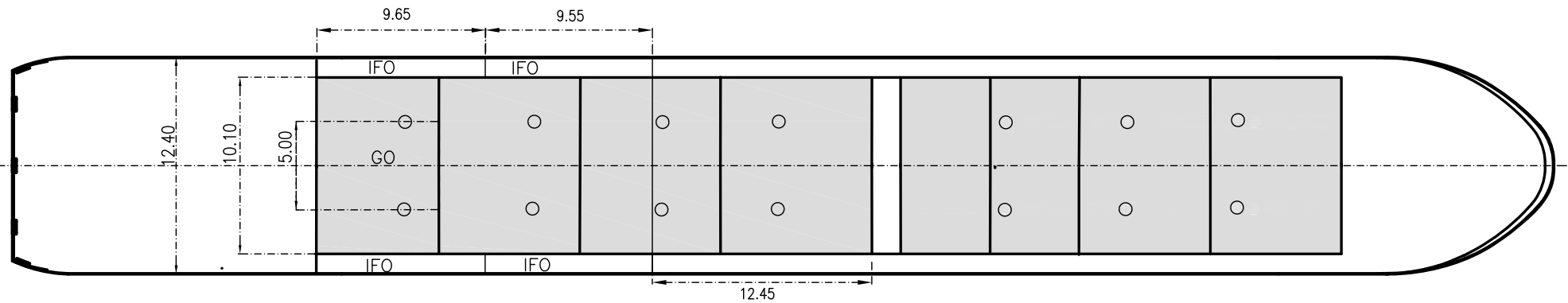
WILSON A YR

DEADWEIGHT GROUP
3500 dwt



IF GRAIN BULKHEADS IN POS.A - LENGTH = 31.34 MTS
WITHOUT GRAIN BULKHEADS - LENGTH = 31.75 MTS

IF GRAIN BULKHEADS IN POS.B - LENGTH = 24.70MTS
WITHOUT GRAIN BULKHEADS - LENGTH = 25.20MTS





WILSON AYR

If not otherwise specified :
Dist/Dim in meters
Weights in m.tons

All details given in good faith without guarantee

Ex. HAYO UNKEN
DWT GROUP 3500
IMO NO 9313711
CALL SIGN 9HSU9
BUILD 12/2008
FLAG Malta

Builders Slovenska Lodenice AS, Komarno Slovakia
Classification GL / 100 A5 E G SOLAS II Req 19 DBC C2P40 MC E AUT
Length oa 88.30
Breadth mld 12.40
Depth mld 7.76
Draft summer 5.15
Deadweight summer draft 3597
Draft winter 5.03
Deadweight winter draft 3480
Gross tonnage 2451
Net tonnage 1033
Immersion(load draft) TPC 10.55
Mean draft of ship in heavy ballast 3.10
Distance from forward end of No.1 Hatch to aft end of last hatch 58.60
Hatch type TTS multifold crocodile
Container (TEU) capacity Hold / Deck - / 20

Max permissible load on deck, mt/sqm 1.60
Max permissible load on tanktop, mt/sqm 15.00
Max air draft - 1 20.55
Max air draft - 2 13.00
Distance from keel to top antenna -1 22.35
Distance from keel to top antenna -2 -
Water ballast capacity 1 378.00
Fuel main engine - capa.(cbm) 170.00
Fuel aux engine - capa.(cbm) 44.00
Speed service, knots 10.30
Cargo gear No
Bow thruster 130 kW Yes
Boxed Yes
Double skin Yes
Open hatch Yes
Rhine fitted No
Ammonium Nitrate fitted Yes
FeSi fitted Yes

Hatch details:

a : Distance from waterline fully ballasted to top of hatch coamings
b : Distance from waterline fully loaded to top of hatch coamings
c : Distance from tank top to top of hatch coamings
d : Max permissible loading on hatch covers
e : Distance from ship's rail to inside hatch coamings
f : Height of hatch coamings
g : Hatch opening
h : No. of Loadingholes on hatchcovers X diameter in mm

Remarks :

2 movable bulkheads/9 different positions/4 different compartements.
Equipped for carriage of containers only on hatch 2 (20 TAU).
Equipped for dangerous goods.
Hatch opening (g) is excl. Bulkheads.
Hold dimensions are incl. Bulkheads in parked positions.
Thickness of bulkheads are 275mm each.

Htch#	Bale							Grain				Hold dimensions	Compartm :		Communication :		Equipment		
	a	b	c	d	e	f	g	h	Hold#	cbm	cbft		cbm	cbft	#	cbm		Type	No
1	5.77	3.88	7.78	1.60	0.95	2.31	25.20 x 10.10	6 x 600mm	1	1962	69 292	1962	69 292	24.70 x 10.10 x 7.776	a	321	Telex 1	424946711	Inmarsat
2	5.77	3.88	7.78	1.60	0.95	2.31	31.80 x 10.10	8 x 600mm	2	2479	87 542	2479	87 542	31.34 x 10.10 x 7.776	b	120	Telex 2	424946712	Inmarsat
															c	239	Tlph 1	008816 3183 4727	Inmarsat
															d	334	Tlph 2	+49 162 238 5090	Gsm
															e	500	Fax		
															f	168	Email	master.wilsonayr@telaurus.net	
															g	179			
															h	317			
															i	215			
															j	689			
															k	784			
															l	168			
															m	226			