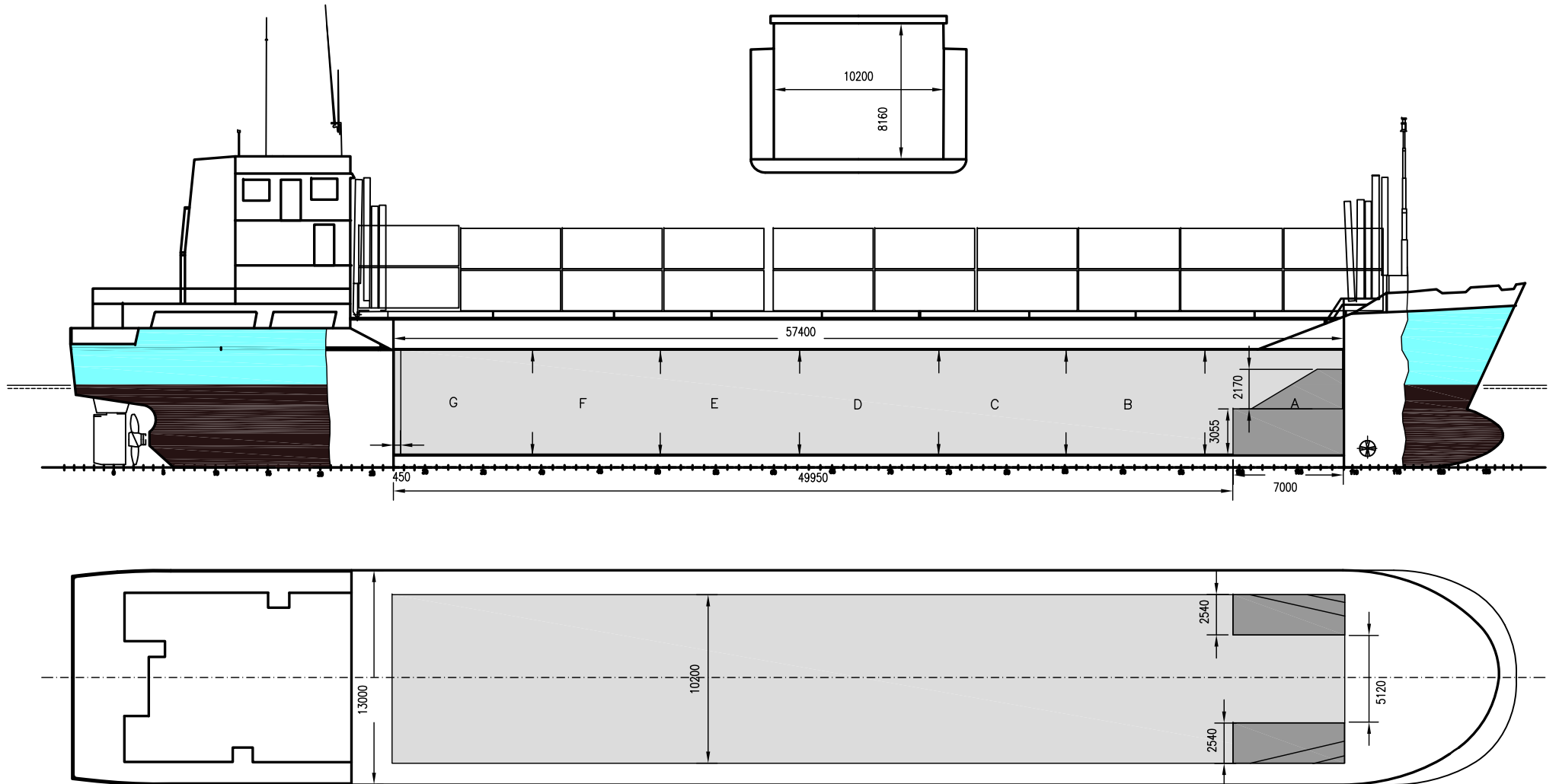




# WILSON DOVER

DEADWEIGHT GROUP  
3000 dwt





# WILSON DOVER

If not otherwise specified :  
Dist/Dim in meters  
Weights in m.tons

All details given in good faith without guarantee

DWT GROUP      3000  
IMO NO          9005754  
CALL SIGN      8PUH  
BUILD          1993  
FLAG            Barbados

**Builders** ..... Estaleiros Navais do Mondego, Figureira da Foz  
**Classification** ..... GL / +100 A5 E SOLAS-II-2 Req.19 MC E AUT  
**Length oa** ..... 87.42  
**Breadth mld** ..... 13.00  
**Depth mld** ..... 7.11  
**Draft summer** ..... 5.07  
**Deadweight summer draft** ..... 3269  
**Draft winter** ..... 5.07  
**Deadweight winter draft** ..... 3269  
**Gross tonnage** ..... 2480  
**Net tonnage** ..... 1206  
**Immersion(load draft) TPC** ..... 10.40  
**Mean draft of ship in heavy ballast** ..... 3.65  
**Distance from forward end of No.1 Hatch to aft end of last hatch** ..... 57.40  
**Hatch type** ..... Kvaerner Multifold crocodile, with hydraulic control  
**Container (TEU) capacity Hold / Deck** ..... 104 / 98

### Hatch details:

- a : Distance from waterline fully ballasted to top of hatch coamings  
b : Distance from waterline fully loaded to top of hatch coamings  
c : Distance from tank top to top of hatch coamings  
d : Max permissible loading on hatch covers  
e : Distance from ship's rail to inside hatch coamings  
f : Height of hatch coamings  
g : Hatch opening  
h : No. of Loadingholes on hatchcovers X diameter in mm

### Remarks :

- One bulkhead - 7 different positions.  
Bulkhead dimentions: 0.26m x 9.86m x 7.89m =20.2 cbm  
Parking position aft.  
Fesi fitted for packaged goods only.

**Max permissible load on deck, mt/sqm** ..... 1.70  
**Max permissible load on tanktop, mt/sqm** ..... 12.00  
**Max air draft - 1** ..... 24.50  
**Max air draft - 2** ..... -  
**Distance from keel to top antenna -1** ..... 28.00  
**Distance from keel to top antenna -2** ..... -  
**Water ballast capacity** ..... 1 604.70  
**Fuel main engine - capa.(cbm)** ..... 142.20  
**Fuel aux engine - capa.(cbm)** ..... -  
**Speed service, knots** ..... 11.00  
**Cargo gear** ..... No  
**Bow thruster** ..... 130 Kw . Yes  
**Boxed** ..... Yes  
**Double skin** ..... Yes  
**Open hatch** ..... Yes  
**Rhine fitted** ..... No  
**Ammonium Nitrate fitted** ..... Yes  
**FeSi fitted** ..... Yes

Htch#	a	b	c	d	e	f	g	h	Hold#	Bale		Grain		Hold dimensions	Compartment :		Communication :		Equipment
										cbm	cbft	cbm	cbft		#	cbm	Type	No	
1	5.64	4.24	8.16	1.70	1.30	2.22	57.40 x 10.20	17 x 590mm	1	4576	161 601	4630	163 508	57.40 x 10.20 x 8.16	a	580	Telex 1	431425110	Inmarsat
															b	676	Telex 2	431425111	Inmarsat
															c	676	Tlph 1	+47 417 84 618	Gsm
															d	676	Tlph 2		
															e	676	Fax		
															f	676	Email	w-dover@gtw.dualog.com	
															g	676			