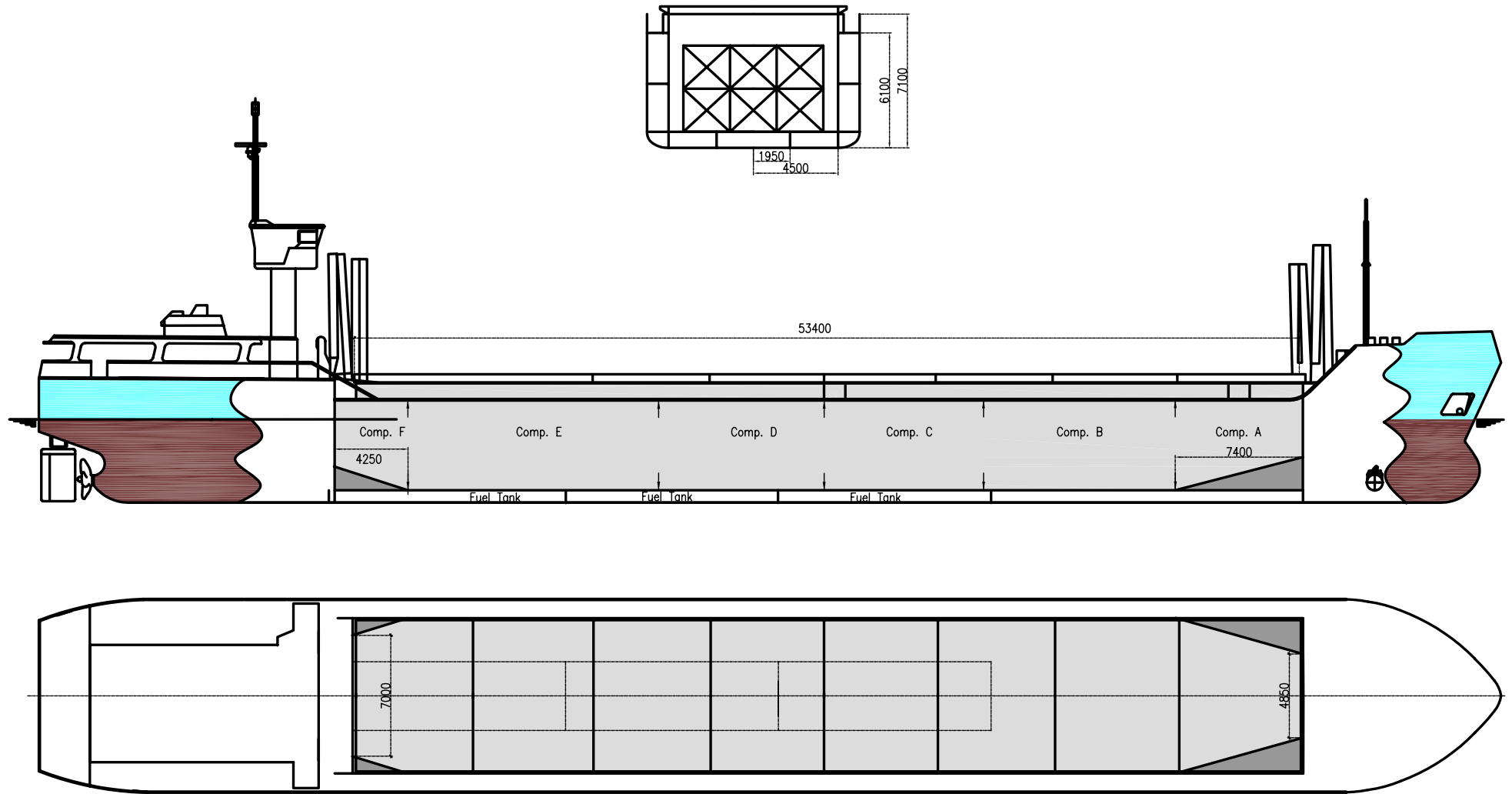




# WILSON ELBE





# WILSON ELBE

If not otherwise specified :  
Dist/Dim in meters  
Weights in m.tons

All details given in good faith without guarantee

DWT GROUP 1850-2400  
IMO NO 9060675  
CALL SIGN 9HGK9  
BUILD 1993  
FLAG Malta

<b>Builders</b>	Slovenske Lodenic
<b>Classification</b>	GL / 100 A5 M E +MC E AUT
<b>Length oa</b>	82.50
<b>Breadth mld</b>	11.35
<b>Depth mld</b>	6.10
<b>Draft summer</b>	4.79
<b>Deadweight summer draft</b>	2676
<b>Draft winter</b>	4.69
<b>Deadweight winter draft</b>	2593
<b>Gross tonnage</b>	1589
<b>Net tonnage</b>	844
<b>Immersion(load draft) TPC</b>	9.00
<b>Mean draft of ship in heavy ballast</b>	2.60
<b>Distance from forward end of No.1 Hatch to aft end of last hatch</b>	53.40
<b>Hatch type</b>	Kvaerner Multifold, Crocodile
<b>Container (TEU) capacity Hold / Deck</b>	46 / 72

### Hatch details:

- a : Distance from waterline fully ballasted to top of hatch coamings  
b : Distance from waterline fully loaded to top of hatch coamings  
c : Distance from tank top to top of hatch coamings  
d : Max permissible loading on hatch covers  
e : Distance from ship's rail to inside hatch coamings  
f : Height of hatch coamings  
g : Hatch opening  
h : No. of Loadingholes on hatchcovers X diameter in mm

### Remarks :

- Semi-boxed hold with small sloping plates in sides forward and aft (see drawing).  
2 moveable bulkheads, full hold height, 5 positions.  
Max length of hold is 54.60m, but free length on tanktop with bulkheads stored in aft position is 52.50 m.

<b>Max permissible load on deck, mt/sqm</b>	-
<b>Max permissible load on tanktop, mt/sqm</b>	12.00
<b>Max air draft - 1</b>	20.40
<b>Max air draft - 2</b>	10.40
<b>Distance from keel to top antenna -1</b>	23.00
<b>Distance from keel to top antenna -2</b>	13.00
<b>Water ballast capacity</b>	1 025.00
<b>Fuel main engine - capa.(cbm)</b>	134.00
<b>Fuel aux engine - capa.(cbm)</b>	-
<b>Speed service, knots</b>	10.50
<b>Cargo gear</b>	No
<b>Bow thruster</b>	175 kW . Yes
<b>Boxed</b>	No
<b>Double skin</b>	Yes
<b>Open hatch</b>	Yes
<b>Rhine fitted</b>	Yes
<b>Ammonium Nitrate fitted</b>	Yes
<b>FeSi fitted</b>	Yes

Htch#	a	b	c	d	e	f	g	h	Hold#	Bale		Grain		Hold dimensions	Compartm :		Communication :		Equipment
										cbm	cbft	cbm	cbft		#	cbm	Type	No	
1	4.50	2.31	6.23	-	1.18	1.00	53.40 x 9.00		1	3058	108 000	3058	108 000	54.60 x 9.00 x 6.23	a	436	Telex 1	425695313	Inmarsat
															b	606	Telex 2		
															c	509	Tlph 1	+47 415 66 245	Gsm
															d	500	Tlph 2		
															e	779	Fax		
															f	231	Email	w-elbe@gtw.dualog.com	