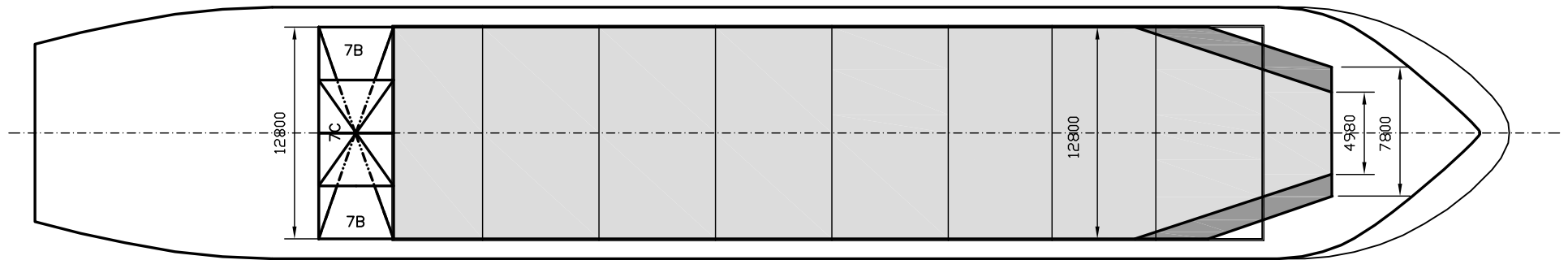
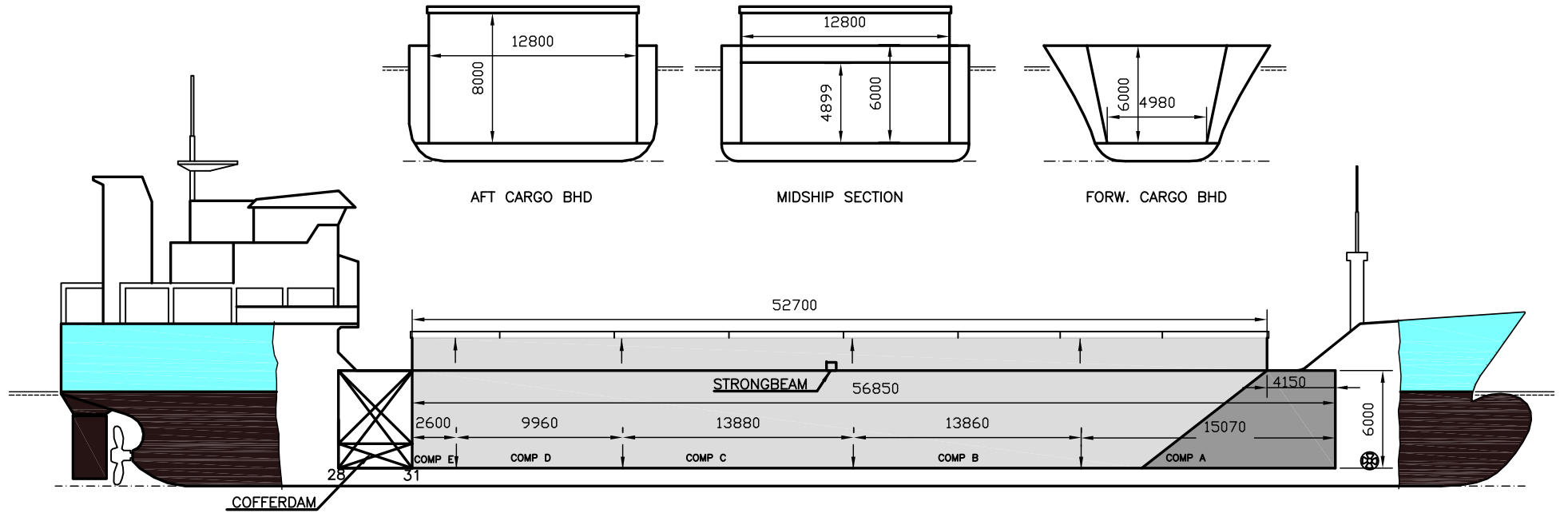




WILSON HUMBER

DEADWEIGHT GROUP
4200 dwt



TANK 7B + 7C = F.O.BUNKER



WILSON HUMBER

Ex. Marble Bay
 DWT GROUP 4000
 IMO NO 9017381
 CALL SIGN 8PSP
 BUILD 1999
 FLAG Barbados

If not otherwise specified :
 Dist/Dim in meters
 Weights in m.tons

All details given in good faith without guarantee

Builders	Brodgradiliste Begej, Zrenjanin, Yugoslavia	Max permissible load on deck, mt/sqm	1.60
Classification	BV // I*HULL*MACH*AUT-UMS aen.cargo ship -heavycargo -unres.na	Max permissible load on tanktop, mt/sqm	12.00
Length oa	89.90	Max air draft - 1	23.60
Breadth mld	15.80	Max air draft - 2	-
Depth mld	7.10	Distance from keel to top antenna -1	27.50
Draft summer	5.64	Distance from keel to top antenna -2	-
Deadweight summer draft	4166	Water ballast capacity	2 006.50
Draft winter	5.52	Fuel main engine - capa.(cbm)	150.00
Deadweight winter draft	4029	Fuel aux engine - capa.(cbm)	23.00
Gross tonnage	3092	Speed service, knots	12.50
Net tonnage	1634	Cargo gear	No
Immersion(load draft) TPC	11.65	Bow thruster	.220 Kw . Yes
Mean draft of ship in heavy ballast	3.90	Boxed	Yes
Distance from forward end of No.1 Hatch to aft end of last hatch	52.70	Double skin	Yes
Hatch type	Mac Gregor Folding type	Open hatch	Yes
Container (TEU) capacity Hold / Deck	- / -	Rhine fitted	No
		Ammonium Nitrate fitted	Yes
		FeSi fitted	Yes

Hatch details:

- a : Distance from waterline fully ballasted to top of hatch coamings
 b : Distance from waterline fully loaded to top of hatch coamings
 c : Distance from tank top to top of hatch coamings
 d : Max permissible loading on hatch covers
 e : Distance from ship's rail to inside hatch coamings
 f : Height of hatch coamings
 g : Hatch opening
 h : No. of Loadingholes on hatchcovers X diameter in mm

Remarks :

1 cargo hold fitted with a Strong Beam just aft of midship. 4.90 m deck overhang forward in Cargo Hold. Cargo Hold equipped with 4 quarter-height movable bulkheads which can be stacked into one full bulkhead, 4 positions, possible to separate the Cargo Hold with full height bulkhead into two compartments (three alternatives) as follows: Comp. A + B/C/D, Comp. A/B + C/D, Comp. A/B/C + D (grain or other light cargo); Alternatively, separate the Cargo Hold into four compartments with one half height and two quarter height bulkhead sections (iron ore or similar heavy cargo). Max. Height of bulkhead is 7.8m, or max. 2.0m height if 4 compartments.
 NB - The movable bulkhead sections must be shifted by shore crane!
 When not in use, bulkhead sections normally stacked and stored in midship position. For full and complete load, SG must be minimum 1.6 t/m3 (S/F minimum 56 cbft/mt). In aft part bulkhead to be placed 3m forward of aft bulkhead (frame 31), when required for dangerous cargoes. The hold is boxed up to forward movable bulkhead in position.

Htch#	a	b	c	d	e	f	g	h	Hold#	Bale		Grain		Hold dimensions	Compartment :		Communication :		Equipment
										cbm	cbft	cbm	cbft		#	cbm	Type	No	
1	5.20	3.50	8.00	1.60	1.50	2.00	50.00 x 12.80	0	1	5340	188 582	5340	188 582	56.85 x 12.80 x 8.00	a	1 234	Telex 1	431 420 710	Inmarsat
															b	1 418	Telex 2		
															c	1 408	Tlph 1	+47 909 90 633	Gsm
															d	1 045	Tlph 2		
															e	235	Fax		
																Email	w-humber@gtw.dualog.com		