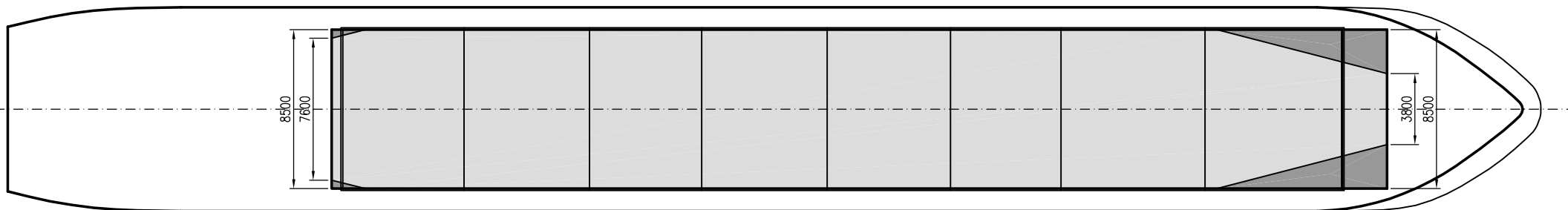
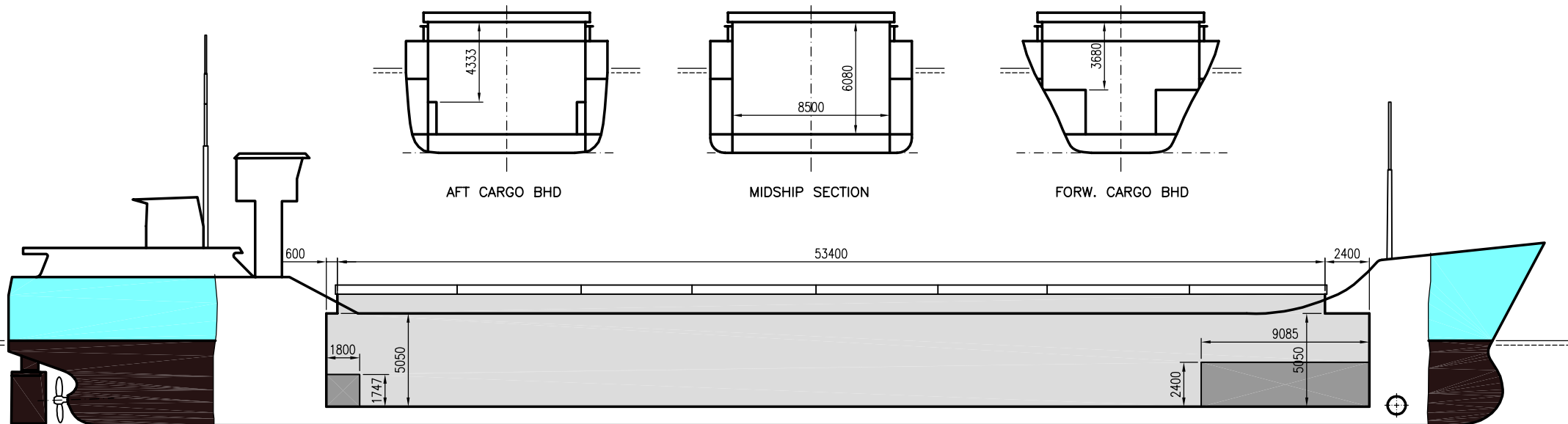




WILSON LAHN

DEADWEIGHT GROUP
1850 – 2400 dwt





WILSON LAHN

If not otherwise specified :
Dist/Dim in meters
Weights in m.tons

All details given in good faith without guarantee

DWT GROUP 1850-2400
IMO NO 9198458
CALL SIGN 8PUO
BUILD 2001
FLAG Barbados

Builders	CSPL a.s. Chvaletice
Classification	GL / +100 A5 E G AHTS Solas-II-2 Req.19 + MC E AUT
Length oa	83.20
Breadth mld	10.90
Depth mld	6.05
Draft summer	4.78
Deadweight summer draft	2508
Draft winter	4.73
Deadweight winter draft	2401
Gross tonnage	1559
Net tonnage	815
Immersion(load draft) TPC	8.30
Mean draft of ship in heavy ballast	3.10
Distance from forward end of No.1 Hatch to aft end of last hatch	53.40
Hatch type	Kvaerner Multifold, Crocodile
Container (TEU) capacity Hold / Deck	46 / 48

Hatch details:

- a : Distance from waterline fully ballasted to top of hatch coamings
b : Distance from waterline fully loaded to top of hatch coamings
c : Distance from tank top to top of hatch coamings
d : Max permissible loading on hatch covers
e : Distance from ship's rail to inside hatch coamings
f : Height of hatch coamings
g : Hatch opening
h : No. of Loadingholes on hatchcovers X diameter in mm

Remarks :

- 2 movable bulkheads, 6 possible positions - bulkheads can be shifted by hatch cover. Size of bulkhead about 0.3m x 5.9m x 8.5m (15 cbm).
Total grain volume when bulkheads in aft pos. 2593cbm.
Figures given for ME tank capacity includes figures for AUX.

Max permissible load on deck, mt/sqm	1.56
Max permissible load on tanktop, mt/sqm	14.00
Max air draft - 1	19.00
Max air draft - 2	8.50
Distance from keel to top antenna -1	22.00
Distance from keel to top antenna -2	11.00
Water ballast capacity	1 165.96
Fuel main engine - capa.(cbm)	147.62
Fuel aux engine - capa.(cbm)	-
Speed service, knots	11.00
Cargo gear	No
Bow thruster	140 Kw . Yes
Boxed	No
Double skin	Yes
Open hatch	No
Rhine fitted	Yes
Ammonium Nitrate fitted	Yes
FeSi fitted	Yes

Hatch#	Bale							h	Hold#	Grain				Hold dimensions	Compartm :		Communication :		Equipment
	a	b	c	d	e	f	g			cbm	cbft	cbm	cbft		#	cbm	Type	No	
1	4.00	2.30	6.08	1.56	1.20	1.03	53.40 x 8.50	0	1	2805	99 059	2805	99 059	56.30 x 8.50 x 6.08 (5.90)	a	300	Telex 1		
															b	467	Telex 2		
															c	361	Tlph 1	+47 414 43 638	Gsm
															d	660	Telex 2		
															e	540	Fax		
															f	300	Email	w-lahn@gtw.dualog.com	