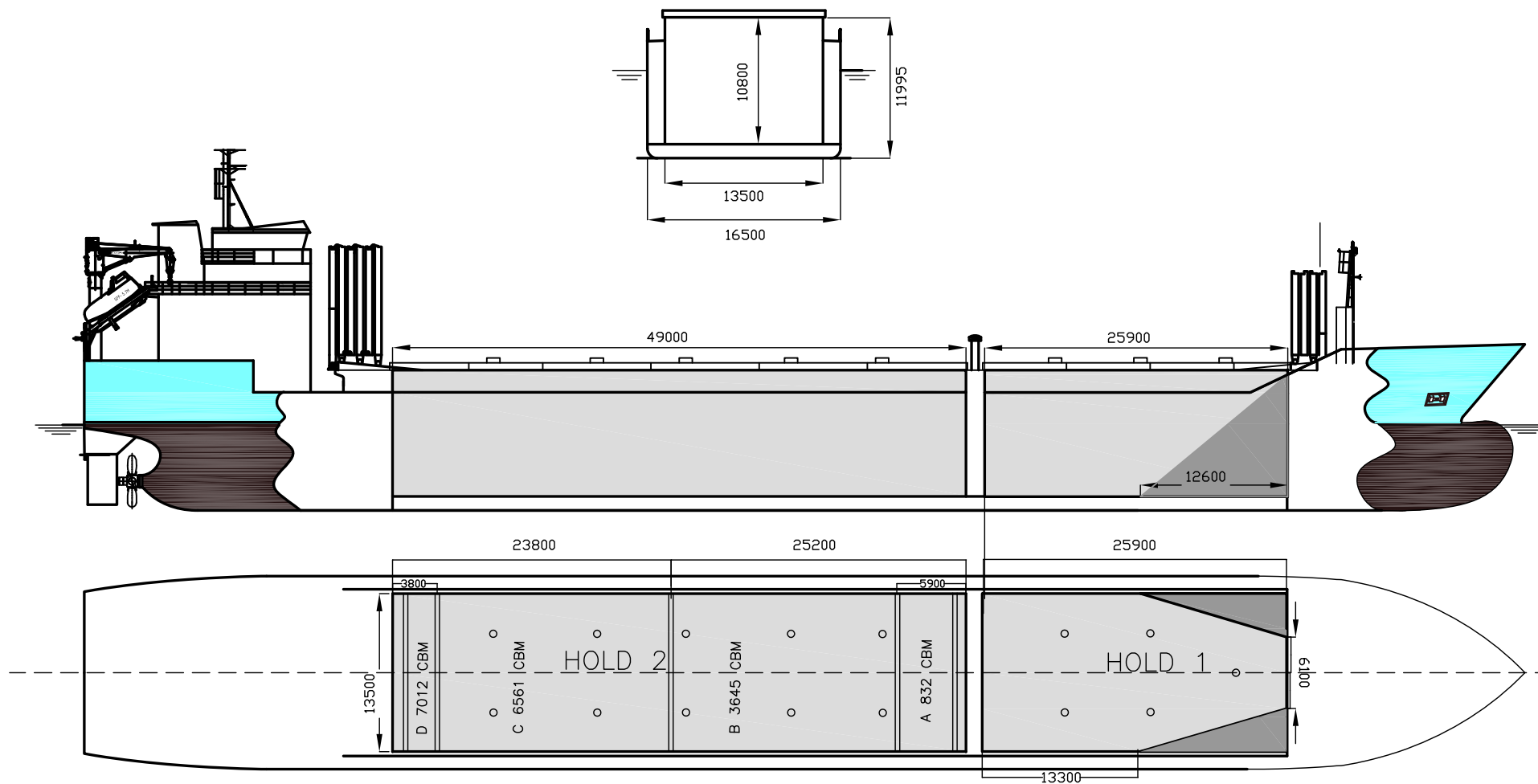


DEADWEIGHT GROUP

8300 dwt





WILSON NICE

If not otherwise specified :
Dist/Dim in meters
Weights in m.tons

DWT GROUP 8000
IMO NO 9430959
CALL SIGN 9HA2385
BUILD 2010
FLAG Malta

All details given in good faith without guarantee

Builders	CSC Yichang Shipyard, Yichang, China
Classification	GL / 100 A5 E1 G BMW SOLAS-II-2 Req.19DBC +MC E1 AUT
Length oa	123.10
Breadth mld	16.50
Depth mld	10.00
Draft summer	7.40
Deadweight summer draft	8302
Draft winter	7.25
Deadweight winter draft	8077
Gross tonnage	6118
Net tonnage	2966
Immersion(load draft) TPC	17.65
Mean draft of ship in heavy ballast	4.09
Distance from forward end of No.1 Hatch to aft end of last hatch	75.94
Hatch type	Mac Gregor Folding type
Container (TEU) capacity Hold / Deck	- / -

Hatch details:

- a : Distance from waterline fully ballasted to top of hatch coamings
b : Distance from waterline fully loaded to top of hatch coamings
c : Distance from tank top to top of hatch coamings
d : Max permissible loading on hatch covers
e : Distance from ship's rail to inside hatch coamings
f : Height of hatch coamings
g : Hatch opening
h : No. of Loadingholes on hatchcovers X diameter in mm

Remarks :

- Hold 1 with sloping plates 12.6m forward (see drawing).
Hold 2 boxed, one movable bulkhead in hold no. 2, three different positions + two parking positions. Bulkhead dim about 0.4m x 13.5m x 10.8m .
Bale/grain capacity at 7050 cbm for hold 2 is with bulkhead in fwd parking position. Cubic capacity with bulkhead in aft parking position is 7064 cbm.
Cubic capacity hold 2 without bulkhead is 7174 cbm. Cubic capacity hold 2 with bulkhead in pos. 1, 2 and 3 is 7101 cbm.
Vessel can load steel coils 45 tons length at least 2 floors.
Free space on hatch on each side of ventilation construction is 3.65 m sideways.
Vessel able to call NAABSA ports.

Max permissible load on deck, mt/sqm	3.50
Max permissible load on tanktop, mt/sqm	15.00
Max air draft - 1	28.23
Max air draft - 2	-
Distance from keel to top antenna -1	32.32
Distance from keel to top antenna -2	-
Water ballast capacity	2 942.00
Fuel main engine - capa.(cbm)	400.00
Fuel aux engine - capa.(cbm)	60.00
Speed service, knots	13.00
Cargo gear	No
Bow thruster	450 kW . Yes
Boxed	Yes
Double skin	Yes
Open hatch	Yes
Rhine fitted	No
Ammonium Nitrate fitted	Yes
FeSi fitted	Yes

Htch#	a b c d e f g							h	Hold#	Bale		Grain		Hold dimensions	Compartment :		Communication :		Equipment
	cm	cm	cm	cm	cm	cm	cm			cbm	cbft	cbm	cbft		#	cbm	Type	No	
1	8.50	4.60	10.80	1.80	1.50	2.00	25.90 x 13.50	5 x 700mm	1	3681	130 002	3681	130 002	25.90 x 13.50 x 10.845			Telex 1	424 849 410	Inmarsat
2	7.50	4.60	10.80	1.80	1.50	2.00	49.70 x 13.50	10 x 700mm	2	7050	248 960	7050	248 960	49.00 x 13.50 x 10.845			Telex 2	424 849 411	Inmarsat
																	Tlph 1	+47 482 76 615	Gsm
																	Tlph 2		
																	Fax		
																	Email	w-nice@wilsonfleet.no	