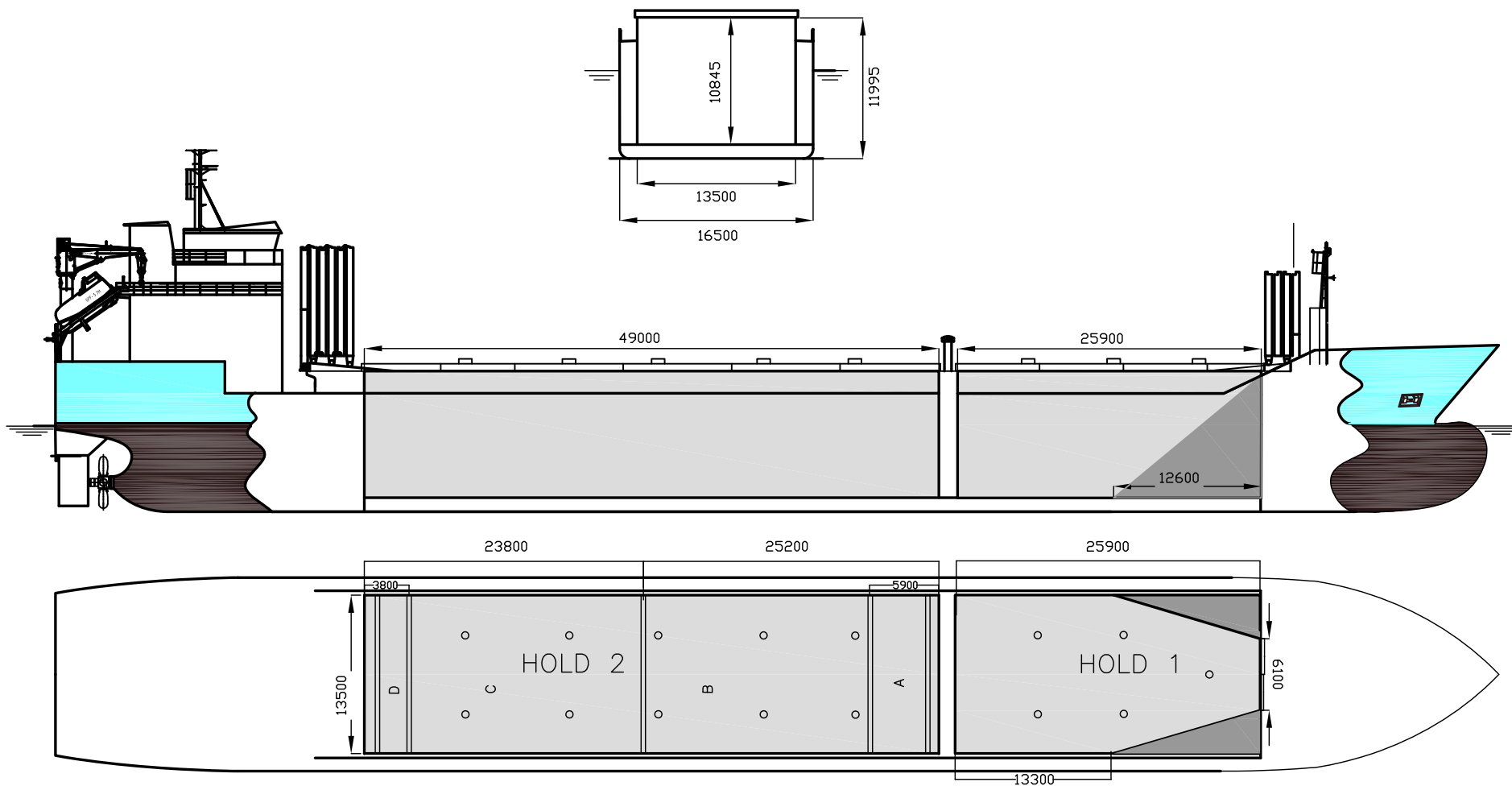


# WILSON NORTH

DEADWEIGHT GROUP

8300 dwt





# WILSON NORTH

If not otherwise specified :  
Dist/Dim in meters  
Weights in m.tons

**DWT GROUP** 8000  
**IMO NO** 9430947  
**CALL SIGN** 9HA2312  
**BUILD** 05/2010  
**FLAG** Malta

All details given in good faith without guarantee

<b>Builders</b>	CSC Yichang Shipyard, Yichang, China
<b>Classification</b>	GL / 100 A5 E1 G BMW SOLAS-II-2 Req.19DBC +MC E1 AUT
<b>Length oa</b>	123.10
<b>Breadth mld</b>	16.50
<b>Depth mld</b>	10.00
<b>Draft summer</b>	7.40
<b>Deadweight summer draft</b>	8308
<b>Draft winter</b>	7.24
<b>Deadweight winter draft</b>	8083
<b>Gross tonnage</b>	6118
<b>Net tonnage</b>	2966
<b>Immersion(load draft) TPC</b>	17.65
<b>Mean draft of ship in heavy ballast</b>	4.09
<b>Distance from forward end of No.1 Hatch to aft end of last hatch</b>	75.94
<b>Hatch type</b>	Mac Gregor Folding type
<b>Container (TEU) capacity Hold / Deck</b>	- / -

<b>Max permissible load on deck, mt/sqm</b>	3.50
<b>Max permissible load on tanktop, mt/sqm</b>	15.00
<b>Max air draft - 1</b>	28.23
<b>Max air draft - 2</b>	-
<b>Distance from keel to top antenna -1</b>	32.32
<b>Distance from keel to top antenna -2</b>	-
<b>Water ballast capacity</b>	2 880.00
<b>Fuel main engine - capa.(cbm)</b>	409.80
<b>Fuel aux engine - capa.(cbm)</b>	65.20
<b>Speed service, knots</b>	13.00
<b>Cargo gear</b>	No
<b>Bow thruster</b>	400 kW . Yes
<b>Boxed</b>	Yes
<b>Double skin</b>	Yes
<b>Open hatch</b>	Yes
<b>Rhine fitted</b>	No
<b>Ammonium Nitrate fitted</b>	Yes
<b>FeSi fitted</b>	Yes

### Hatch details:

- a : Distance from waterline fully ballasted to top of hatch coamings  
b : Distance from waterline fully loaded to top of hatch coamings  
c : Distance from tank top to top of hatch coamings  
d : Max permissible loading on hatch covers  
e : Distance from ship's rail to inside hatch coamings  
f : Height of hatch coamings  
g : Hatch opening  
h : No. of Loadingholes on hatchcovers X diameter in mm

### Remarks :

- Hold 1 with sloping plates 12.6m forward (see drawing).  
Hold 2 boxed, one movable bulkhead in hold no. 2, three different positions + two parking positions. Bulkhead dim about 0.4m x 13.5m x 10.8m .  
Bale/grain capacity at 7050 cbm for hold 2 is with bulkhead in fwd parking position. Cubic capacity with bulkhead in aft parking position is 7064 cbm.  
Cubic capacity hold 2 without bulkhead is 7174 cbm. Cubic capacity hold 2 with bulkhead in pos. 1, 2 and 3 is 7101 cbm.  
Vessel can load steel coils 45 tons length at least 2 floors.  
Free space on hatch on each side of ventilation construction is 3.65 m sideways.  
Vessel able to call NAABSA ports.

Htch#	a b c d e f g							h	Hold#	Bale		Grain		Hold dimensions	Comparm :		Communication :		Equipment
										cbm	cbft	cbm	cbft		#	cbm	Type	No	
1	8.50	4.60	10.55	3.50	1.50	2.00	25.90 x 13.50	5 x 700 mm	1	3681	130 002	3681	130 002	25.90 x 13.50 x 10.845			Telex 1	4248311310	Inmarsat
2	7.50	4.60	10.55	3.50	1.50	2.00	49.70 x 13.50	10 x 700 mm	2	7050	248 960	7050	248 960	49.00 x 13.50 x 10.845			Telex 2	4248311311	Inmarsat
																Tlph 1	+47 476 13 301	Gsm	
																Tlph 2			
																Fax			
																Email	w-north@wilsonfleet.no		