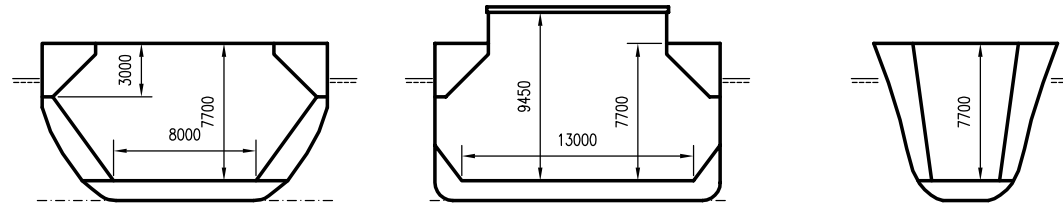


WILSON ROSS

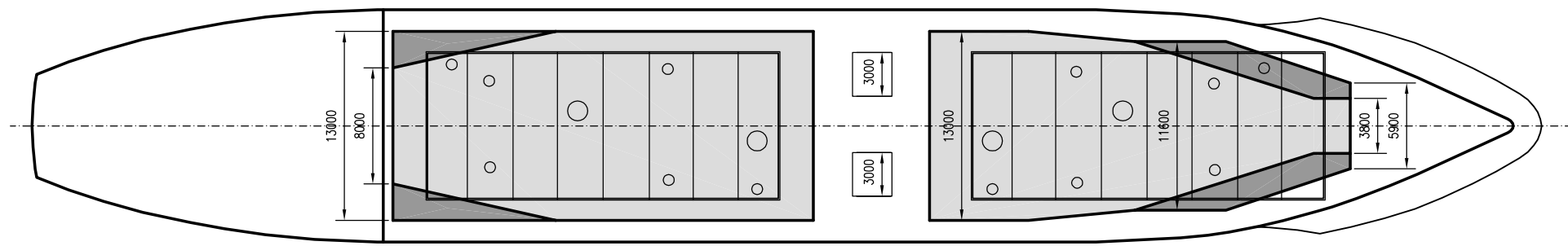
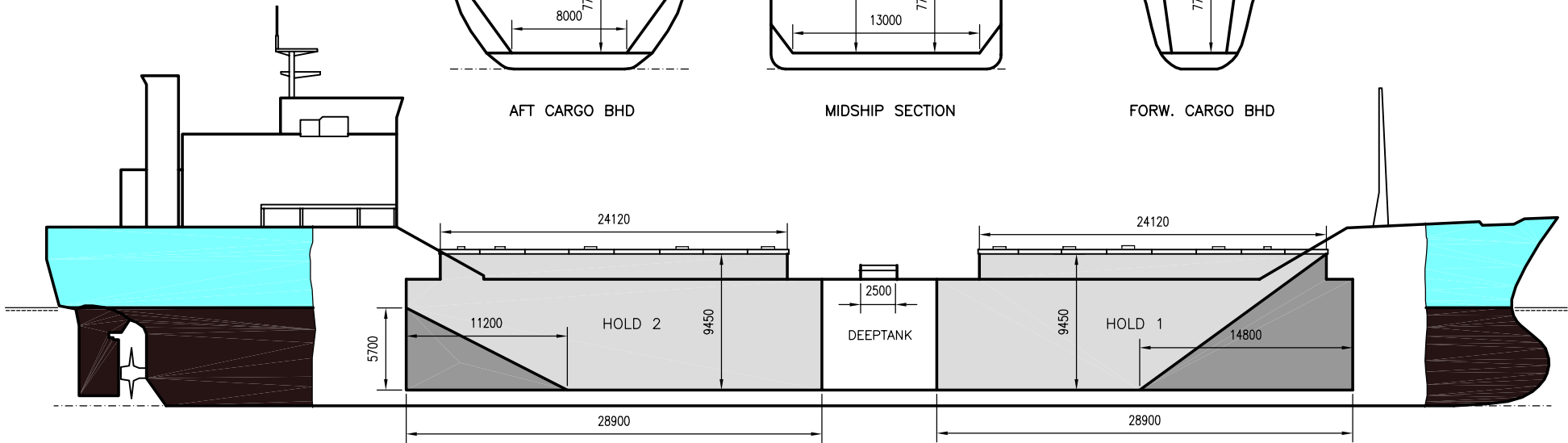
DEADWEIGHT GROUP
6000 dwt



AFT CARGO BHD

MIDSHIP SECTION

FORW. CARGO BHD





WILSON ROSS

Ex. Rossnes
 DWT GROUP 6000
 IMO NO 7382495
 CALL SIGN 9HCC6
 BUILD 1975
 FLAG Malta

If not otherwise specified :
 Dist/Dim in meters
 Weights in m.tons

All details given in good faith without guarantee

Builders Georg Eides Sønner A/S, Høylandsbygd
Classification BV // I*HULL*MACH -Bulk carrier ESP -unres.naviagation + AUT-UMS
Length oa 103.60
Breadth mld 16.00
Depth mld 8.82
Draft summer 6.96
Deadweight summer draft 6135
Draft winter 6.81
Deadweight winter draft 5936
Gross tonnage 3883
Net tonnage 2133
Immersion(load draft) TPC 13.25
Mean draft of ship in heavy ballast 4.35
Distance from forward end of No.1 Hatch to aft end of last hatch 61.00
Hatch type Kvaerner Transroto (Double Skin)
Container (TEU) capacity Hold / Deck - / -

Max permissible load on deck, mt/sqm 3.40
Max permissible load on tanktop, mt/sqm 8.30
Max air draft - 1 24.50
Max air draft - 2 -
Distance from keel to top antenna -1 28.60
Distance from keel to top antenna -2 -
Water ballast capacity 2 650.00
Fuel main engine - capa.(cbm) 420.00
Fuel aux engine - capa.(cbm) 58.00
Speed service, knots 12.50
Cargo gear No
Bow thruster No
Boxed No
Double skin Yes
Open hatch No
Rhine fitted No
Ammonium Nitrate fitted No
FeSi fitted No

Hatch details:

- a : Distance from waterline fully ballasted to top of hatch coamings
- b : Distance from waterline fully loaded to top of hatch coamings
- c : Distance from tank top to top of hatch coamings
- d : Max permissible loading on hatch covers
- e : Distance from ship's rail to inside hatch coamings
- f : Height of hatch coamings
- g : Hatch opening
- h : No. of Loadingholes on hatchcovers X diameter in mm

Remarks :

If IFO80 capacity only 154.3 cbm.
 Loading holes on hatch covers:
 Hatch No.1 - 6 x 600mm + 1 x 900mm + 1 x 1000mm
 Hatch No.2 - 6 x 600mm + 1 x 900mm + 1 x 1000mm

Htch#	Bale							Grain				Hold dimensions	Compartm :		Communication :		Equipment		
	a	b	c	d	e	f	g	h	Hold#	cbm	cbft		cbm	cbft	#	cbm		Type	No
1	6.30	3.60	9.43	2.50	2.80	1.75	24.12 x 10.00	8	1	3080	108 770	3080	108 770	30.20 x 15.60 x 7.13			Telex 1	424 837 910	Inmarsat
2	6.30	3.60	9.43	2.50	2.80	1.75	24.12 x 10.00	8	2	3560	125 721	3560	125 721	30.20 x 15.60 x 7.13			Telex 2		
																	Tlph 1	+47 920 33 298	Gsm
																	Fax		
																	Email	w-ross@gtw.dualog.com	