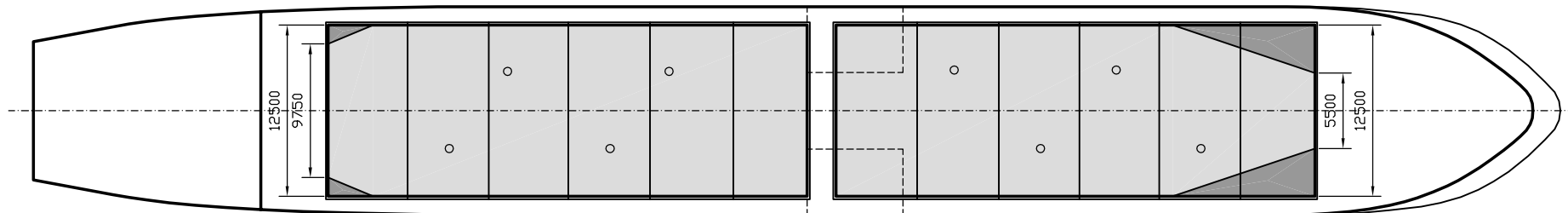
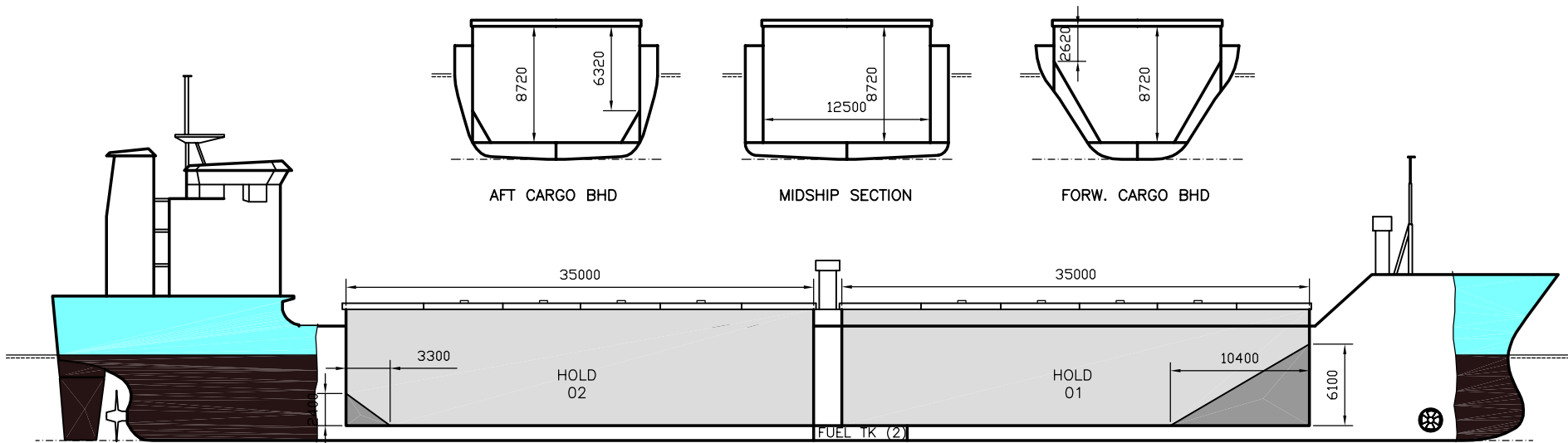


WILSON SKAW

DEADWEIGHT GROUP
6000 dwt





WILSON SKAW

Ex. Elianna
 DWT GROUP 6000
 IMO NO 8918459
 CALL SIGN C6SQ9
 BUILD 07/1996
 FLAG Bahamas

If not otherwise specified :
 Dist/Dim in meters
 Weights in m.tons

All details given in good faith without guarantee

Builders	Apatin Shipyard, Yugoslavia	Max permissible load on deck, mt/sqm	1.75
Classification	BV // I*HULL*MACH*AUT-UMS ICE heavycarao. arabload. unres.nav.	Max permissible load on tanktop, mt/sqm	13.00
Length oa	112.70	Max air draft - 1	25.70
Breadth mld	15.20	Max air draft - 2	-
Depth mld	8.60	Distance from keel to top antenna -1	30.00
Draft summer	6.68	Distance from keel to top antenna -2	-
Deadweight summer draft	6460	Water ballast capacity	2 858.00
Draft winter	6.54	Fuel main engine - capa.(cbm)	372.00
Deadweight winter draft	6260	Fuel aux engine - capa.(cbm)	58.00
Gross tonnage	4197	Speed service, knots	12.50
Net tonnage	2033	Cargo gear	No
Immersion(load draft) TPC	14.80	Bow thruster	800.HP / 590 KW Yes
Mean draft of ship in heavy ballast	4.30	Boxed	No
Distance from forward end of No.1 Hatch to aft end of last hatch	72.00	Double skin	Yes
Hatch type	Kvaerner Multi Stacking, Vertical with hydraulic control	Open hatch	Yes
Container (TEU) capacity Hold / Deck	- / -	Rhine fitted	No
		Ammonium Nitrate fitted	Yes
		FeSi fitted	Yes

Hatch details:

- a : Distance from waterline fully ballasted to top of hatch coamings
 b : Distance from waterline fully loaded to top of hatch coamings
 c : Distance from tank top to top of hatch coamings
 d : Max permissible loading on hatch covers
 e : Distance from ship's rail to inside hatch coamings
 f : Height of hatch coamings
 g : Hatch opening
 h : No. of Loadingholes on hatchcovers X diameter in mm

Remarks :

- Extreme breadth, incl fender list, 15.50m.
 Aux.engine consumption 1.0 mt/day in port only.
 Indicated loading holes on forward and aft section of hatch covers are actually ventilation holes which can also be used as loading holes - dia. same as other loading holes.
 Vessel able to call NAABSA ports.

Htch#	Bale							Grain				Hold dimensions	Compartment :		Communication :		Equipment		
	a	b	c	d	e	f	g	h	Hold#	cbm	cbft		cbm	cbft	#	cbm		Type	No
1	5.90	3.52	8.70	1.75	1.40	1.60	35.00 x 12.50	4 x 700mm	1	3751	132 467	3751	132 467	35.00 x 12.50 x 8.70			Telex 1	431 143 710	Inmarsat
2	5.90	3.52	8.70	1.75	1.40	1.60	35.00 x 12.50	4 x 700mm	2	3823	135 009	3823	135 009	35.00 x 12.50 x 8.70			Telex 2		
																	Tlph 1	+47 902 01 554	Gsm
																	Tlph 2		
																	Fax		
																	Email	w-skaw@gtw.dualog.com	