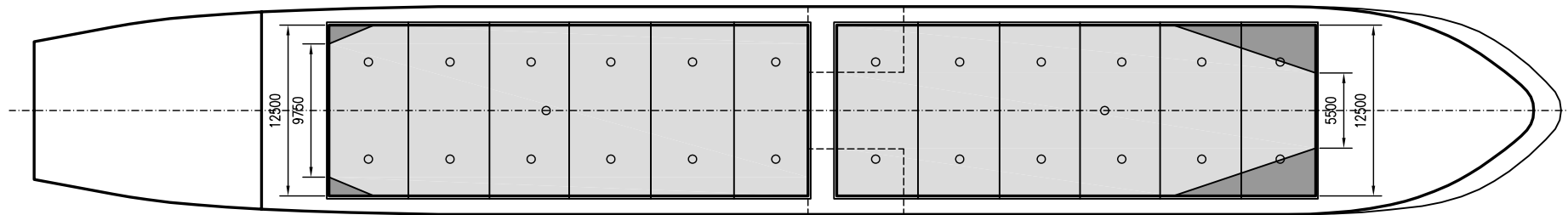
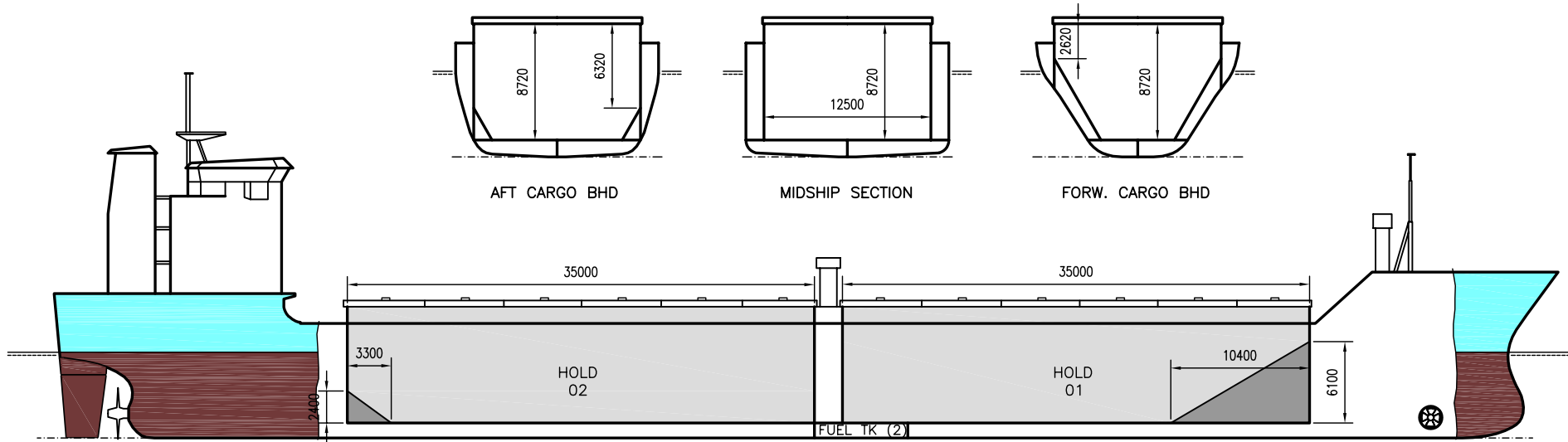




# WILSON STADT

DEADWEIGHT GROUP  
6000 dwt





# WILSON STADT

Ex. Linito  
 DWT GROUP 6000  
 IMO NO 8918485  
 CALL SIGN 9HQW8  
 BUILD 11/2000  
 FLAG Malta

If not otherwise specified :  
 Dist/Dim in meters  
 Weights in m.tons

All details given in good faith without guarantee

<b>Builders</b> .....	Apatin Shipyard, Yugoslavia	<b>Max permissible load on deck, mt/sqm</b> .....	1.75
<b>Classification</b> .....	BV // I *HULL *MACH *AUT-UMS -aen.carao -arabload -ICE -unres.na	<b>Max permissible load on tanktop, mt/sqm</b> .....	13.00
<b>Length oa</b> .....	112.70	<b>Max air draft - 1</b> .....	25.70
<b>Breadth mld</b> .....	15.20	<b>Max air draft - 2</b> .....	-
<b>Depth mld</b> .....	8.60	<b>Distance from keel to top antenna -1</b> .....	30.00
<b>Draft summer</b> .....	6.67	<b>Distance from keel to top antenna -2</b> .....	-
<b>Deadweight summer draft</b> .....	6445	<b>Water ballast capacity</b> .....	2 858.00
<b>Draft winter</b> .....	6.51	<b>Fuel main engine - capa.(cbm)</b> .....	372.00
<b>Deadweight winter draft</b> .....	6239	<b>Fuel aux engine - capa.(cbm)</b> .....	58.00
<b>Gross tonnage</b> .....	4200	<b>Speed service, knots</b> .....	12.50
<b>Net tonnage</b> .....	2144	<b>Cargo gear</b> .....	No
<b>Immersion(load draft) TPC</b> .....	14.80	<b>Bow thruster</b> .....	. 800.hp/590 kw Yes
<b>Mean draft of ship in heavy ballast</b> .....	4.30	<b>Boxed</b> .....	No
<b>Distance from forward end of No.1 Hatch to aft end of last hatch</b> .....	72.00	<b>Double skin</b> .....	Yes
<b>Hatch type</b> .....	Kvaerner Multi Stacking, Vertical with hydraulic control	<b>Open hatch</b> .....	Yes
<b>Container (TEU) capacity Hold / Deck</b> .....	- / -	<b>Rhine fitted</b> .....	No
		<b>Ammonium Nitrate fitted</b> .....	Yes
		<b>FeSi fitted</b> .....	Yes

## Hatch details:

- a : Distance from waterline fully ballasted to top of hatch coamings  
 b : Distance from waterline fully loaded to top of hatch coamings  
 c : Distance from tank top to top of hatch coamings  
 d : Max permissible loading on hatch covers  
 e : Distance from ship's rail to inside hatch coamings  
 f : Height of hatch coamings  
 g : Hatch opening  
 h : No. of Loadingholes on hatchcovers X diameter in mm

## Remarks :

- Extreme breadth, incl fender list, 15.50m.  
 Aux.engine consumption 1.0 mt/day in port only.  
 Vessel able to call NAABSA ports.

Htch#	Bale							Grain				Hold dimensions	Compartment :		Communication :		Equipment		
	a	b	c	d	e	f	g	h	Hold#	cbm	cbft		cbm	cbft	#	cbm		Type	No
1	5.90	3.52	8.70	1.75	1.40	1.60	35.00 x 12.50	13 x 600mm	1	3752	132 486	3752	132 486	35.00 x 12.50 x 8.70			Telex 1	425651210	Inmarsat
2	5.90	3.52	8.70	1.75	1.40	1.60	35.00 x 12.50	13 x 600mm	2	3824	135 037	3824	135 037	35.00 x 12.50 x 8.70			Telex 2		
																	Tlph 1	+47 920 60 353	Gsm
																	Tlph 2		
																	Fax		
																	Email	w-stadt@gtw.dualog.com	