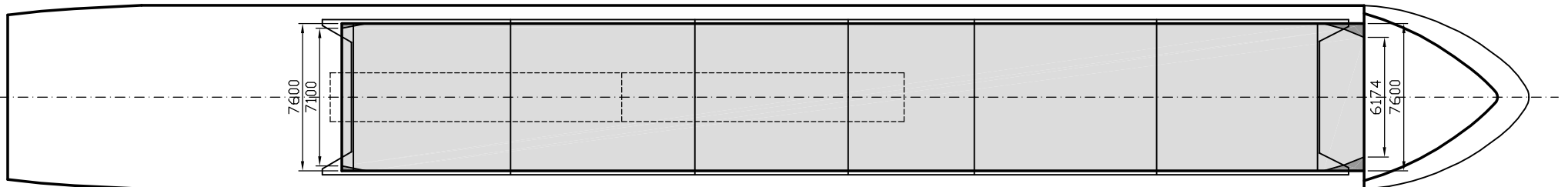
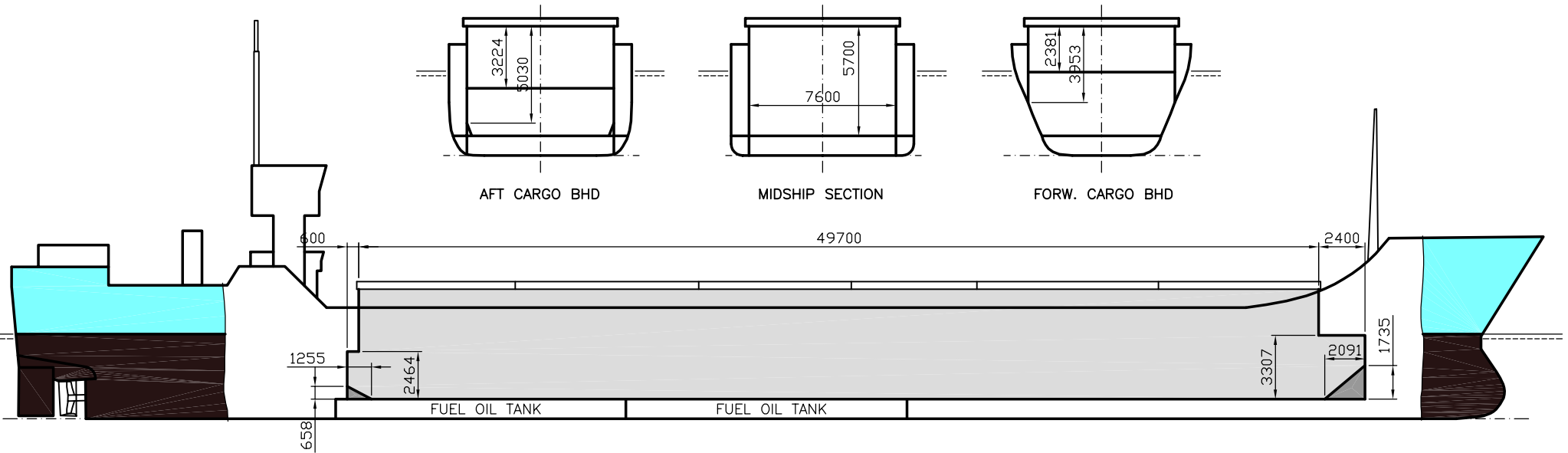


# WILSON WAAL

DEADWEIGHT GROUP  
1850 – 2400 dwt





# WILSON WAAL

Ex. Podebrady  
 DWT GROUP 1850-2400  
 IMO NO 9178446  
 CALL SIGN 8PUR  
 BUILD 1999  
 FLAG Barbados

If not otherwise specified :  
 Dist/Dim in meters  
 Weights in m.tons

All details given in good faith without guarantee

**Builders** ..... CSPL a.s. Chvaletice  
**Classification** ..... GL / +100 A5 M "E" "G" + MC E AUT  
**Length oa** ..... 78.30  
**Breadth mld** ..... 9.46  
**Depth mld** ..... 5.75  
**Draft summer** ..... 4.35  
**Deadweight summer draft** ..... 1826  
**Draft winter** ..... 4.35  
**Deadweight winter draft** ..... 1826  
**Gross tonnage** ..... 1169  
**Net tonnage** ..... 635  
**Immersion(load draft) TPC** ..... 7.14  
**Mean draft of ship in heavy ballast** ..... 3.05  
**Distance from forward end of No.1 Hatch to aft end of last hatch** ..... 49.10  
**Hatch type** ..... Kvaerner Multifold, Crocodile  
**Container (TEU) capacity Hold / Deck** ..... 46 / 24

### Hatch details:

- a : Distance from waterline fully ballasted to top of hatch coamings  
 b : Distance from waterline fully loaded to top of hatch coamings  
 c : Distance from tank top to top of hatch coamings  
 d : Max permissible loading on hatch covers  
 e : Distance from ship's rail to inside hatch coamings  
 f : Height of hatch coamings  
 g : Hatch opening  
 h : No. of Loadingholes on hatchcovers X diameter in mm

### Remarks :

- 7 bulkhead positions are possible, bulkheads can be shifted by hatch cover.  
 Figures given for ME tank capacity and consumption includes figures for AUX.

**Max permissible load on deck, mt/sqm** ..... 1.44  
**Max permissible load on tanktop, mt/sqm** ..... 14.00  
**Max air draft - 1** ..... 19.50  
**Max air draft - 2** ..... 8.00  
**Distance from keel to top antenna -1** ..... 22.50  
**Distance from keel to top antenna -2** ..... 11.00  
**Water ballast capacity** ..... 828.45  
**Fuel main engine - capa.(cbm)** ..... 87.94  
**Fuel aux engine - capa.(cbm)** ..... -  
**Speed service, knots** ..... 10.00  
**Cargo gear** ..... No  
**Bow thruster** ..... Yes  
**Boxed** ..... No  
**Double skin** ..... Yes  
**Open hatch** ..... No  
**Rhine fitted** ..... Yes  
**Ammonium Nitrate fitted** ..... Yes  
**FeSi fitted** ..... Yes

| Htch# | Bale |      |      |      |      |      |              | Grain |       |      |        | Hold dimensions | Compartm : |                     | Communication : |     | Equipment |                       |          |
|-------|------|------|------|------|------|------|--------------|-------|-------|------|--------|-----------------|------------|---------------------|-----------------|-----|-----------|-----------------------|----------|
|       | a    | b    | c    | d    | e    | f    | g            | h     | Hold# | cbm  | cbft   |                 | cbm        | cbft                | #               | cbm |           | Type                  | No       |
| 1     | 3.64 | 2.34 | 5.70 | 1.44 | 0.65 | 0.95 | 49.10 x 7.60 | 0     | 1     | 2072 | 73 173 | 2090            | 73 808     | 48.00 x 7.60 x 5.70 |                 |     | Telex 1   | 431426210             | Inmarsat |
|       |      |      |      |      |      |      |              |       |       |      |        |                 |            |                     |                 |     | Telex 2   | 431426211             | Inmarsat |
|       |      |      |      |      |      |      |              |       |       |      |        |                 |            |                     |                 |     | Tlph 1    | +47 416 61 572        | Gsm      |
|       |      |      |      |      |      |      |              |       |       |      |        |                 |            |                     |                 |     | Tlph 2    | +47 416 61 752        |          |
|       |      |      |      |      |      |      |              |       |       |      |        |                 |            |                     |                 |     | Fax       |                       | Gsm      |
|       |      |      |      |      |      |      |              |       |       |      |        |                 |            |                     |                 |     | Email     | w-waal@gtw.dualog.com |          |