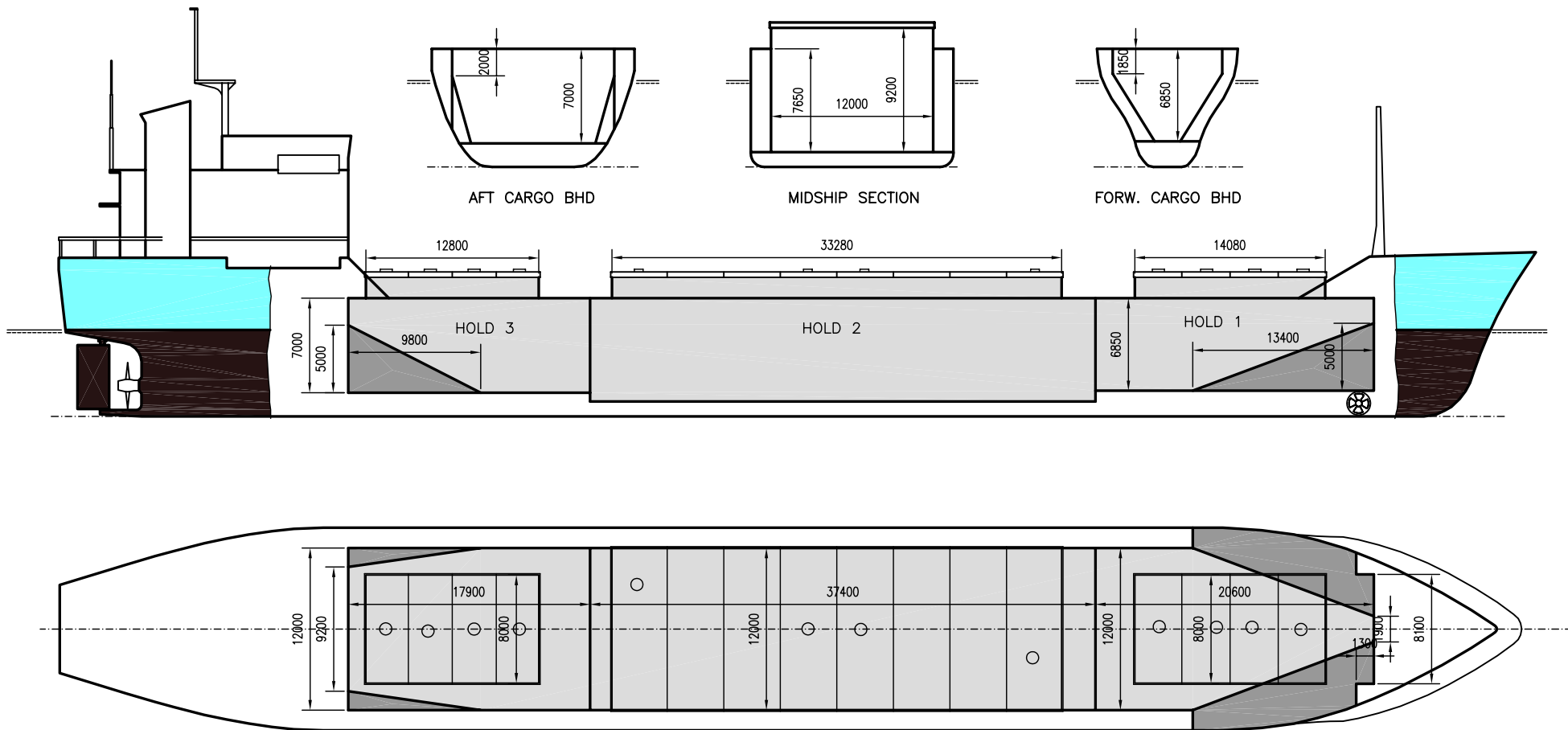


WILSON MERSIN

DEADWEIGHT GROUP
6000 dwt





WILSON MERSIN

Ex. RAMNES
 DWT GROUP 6000
 IMO NO 7810222
 CALL SIGN P3PA6
 BUILD 1981
 FLAG Cyprus

If not otherwise specified :
 Dist/Dim in meters
 Weights in m.tons

All details given in good faith without guarantee

Builders Storvik Mek. Verksted AS
Classification BV // I*HULL*MACH*AUT-UMS -aen cargo - heavycargo
Length oa 107.40
Breadth mld 15.00
Depth mld 8.75
Draft summer 6.72
Deadweight summer draft 6186
Draft winter 6.58
Deadweight winter draft 5995
Gross tonnage 3937
Net tonnage 2062
Immersion(load draft) TPC 13.73
Mean draft of ship in heavy ballast 4.35
Distance from forward end of No.1 Hatch to aft end of last hatch 71.00
Hatch type Kvaerner Multifold, Crocodile
Container (TEU) capacity Hold / Deck - / -

Hatch details:

- a : Distance from waterline fully ballasted to top of hatch coamings
 b : Distance from waterline fully loaded to top of hatch coamings
 c : Distance from tank top to top of hatch coamings
 d : Max permissible loading on hatch covers
 e : Distance from ship's rail to inside hatch coamings
 f : Height of hatch coamings
 g : Hatch opening
 h : No. of Loadingholes on hatchcovers X diameter in mm

Remarks :

- AMM.NITRATE 5.1 HOLD 1, 2 & 3.
 AMM.NITRATE BASED FERTILIZER 5.1 IN HOLD 1 & 2 ONLY.
 AMM.NITRATE BASED FERTILIZER 9 IN HOLD 1 & 2 ONLY.
 Please see certificate for restrictions on FESI & AMM.NITRATE cargoes.

Max permissible load on deck, mt/sqm 1.15
Max permissible load on tanktop, mt/sqm 9.50
Max air draft - 1 27.00
Max air draft - 2 -
Distance from keel to top antenna -1 31.35
Distance from keel to top antenna -2 -
Water ballast capacity 2 651.00
Fuel main engine - capa.(cbm) 350.00
Fuel aux engine - capa.(cbm) 80.00
Speed service, knots 12.50
Cargo gear No
Bow thruster No
Boxed No
Double skin Yes
Open hatch No
Rhine fitted No
Ammonium Nitrate fitted Yes
FeSi fitted Yes

Htch#	Bale							Grain				Hold dimensions	Compartm :		Communication :		Equipment		
	a	b	c	d	e	f	g	h	Hold#	cbm	cbft		cbm	cbft	#	cbm		Type	No
1	7.00	3.75	9.35	1.75	3.30	1.70	14.08 x 8.00	4 x 610mm	1	1666	58 835	1724	60 883	19.20 x 12.00 x 7.60			Telex 1	421 007 010	Inmarsat
2	6.20	3.75	9.35	1.75	1.35	1.70	33.20 x 12.00	4 x 610mm	2	4272	150 865	4312	152 278	40.30 x 12.00 x 7.60			Telex 2		
3	5.40	3.75	9.35	1.75	3.30	1.70	12.80 x 8.00	4 x 610mm	3	1350	47 675	1387	48 982	16.60 x 12.00 x 7.60			Tlph 1	+47 922 03 192	Gsm
																	Fax		
																	Email	w-mersin@wilsonfleet.no	